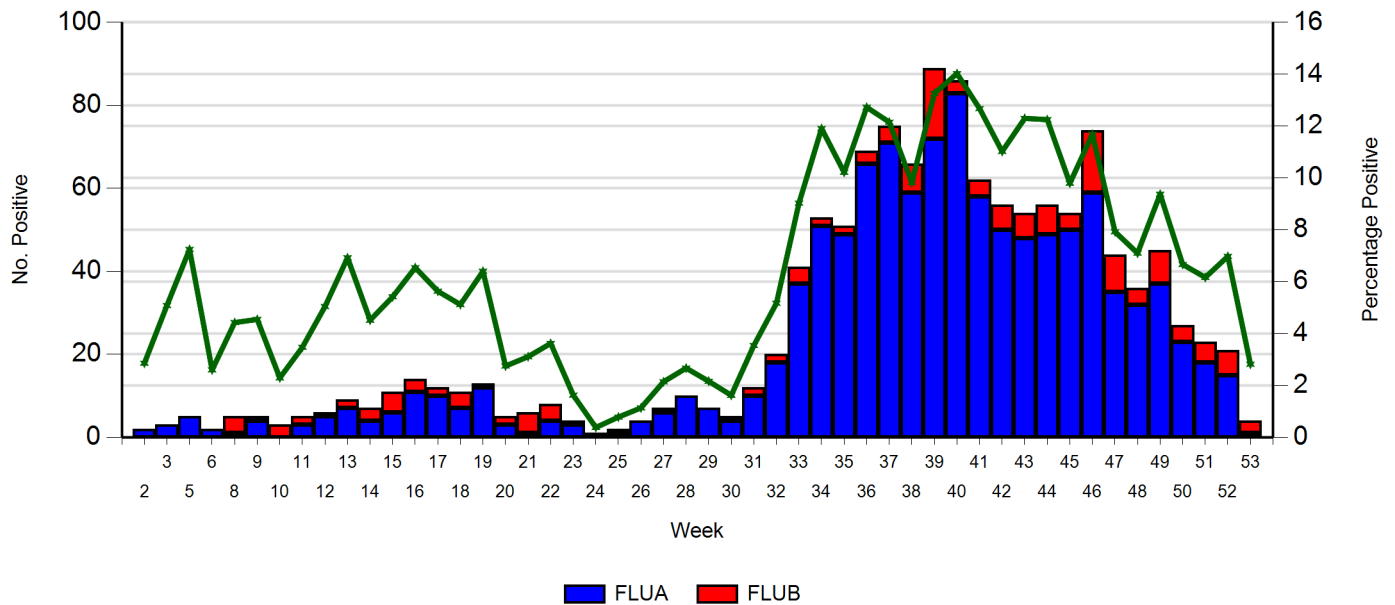


# Respiratory Virus Report 2016

**Figure 1. Positive Influenza Viruses by Week for 2016**



**Table 1. Influenza Viruses by week for 2016**

Week No.	2	3	5	6	8	9	10	11	12	13	14	15	16	17	18	19	20	21	22	23	24	25	26	27	28	29	30	31	32	33	34	35	36	37	38	39	40	41	42	43	44	45	46	47	48	49	50	51	52	53	Total
FLUA	2	3	5	2	1	4		3	5	7	4	6	11	10	7	12	3	1	4	3		1	4	6	10	7	4	10	18	37	51	49	66	71	59	72	83	58	50	48	49	50	59	35	32	37	23	18	15	1	1116
FLUB					4	1	3	2	1	2	3	5	3	2	4	1	2	5	4	1	1	1		1			1	2	2	4	2	2	3	4	7	17	3	4	6	6	7	4	15	9	4	8	4	5	6	3	174
%Pos	3	5	7	3	4	5	2	3	5	7	5	5	7	6	5	6	3	3	4	2	0	1	1	2	3	2	2	4	5	9	12	10	13	12	10	13	14	13	11	12	12	10	12	8	7	9	7	6	7	3	
Total	2	3	5	2	5	5	3	5	6	9	7	11	14	12	11	13	5	6	8	4	1	2	4	7	10	7	5	12	20	41	53	51	69	75	66	89	86	62	56	54	56	54	74	44	36	45	27	23	21	4	1290

**Figure 2a. All Positive Respiratory Viruses by Week for 2016 (Stacked Graph)**

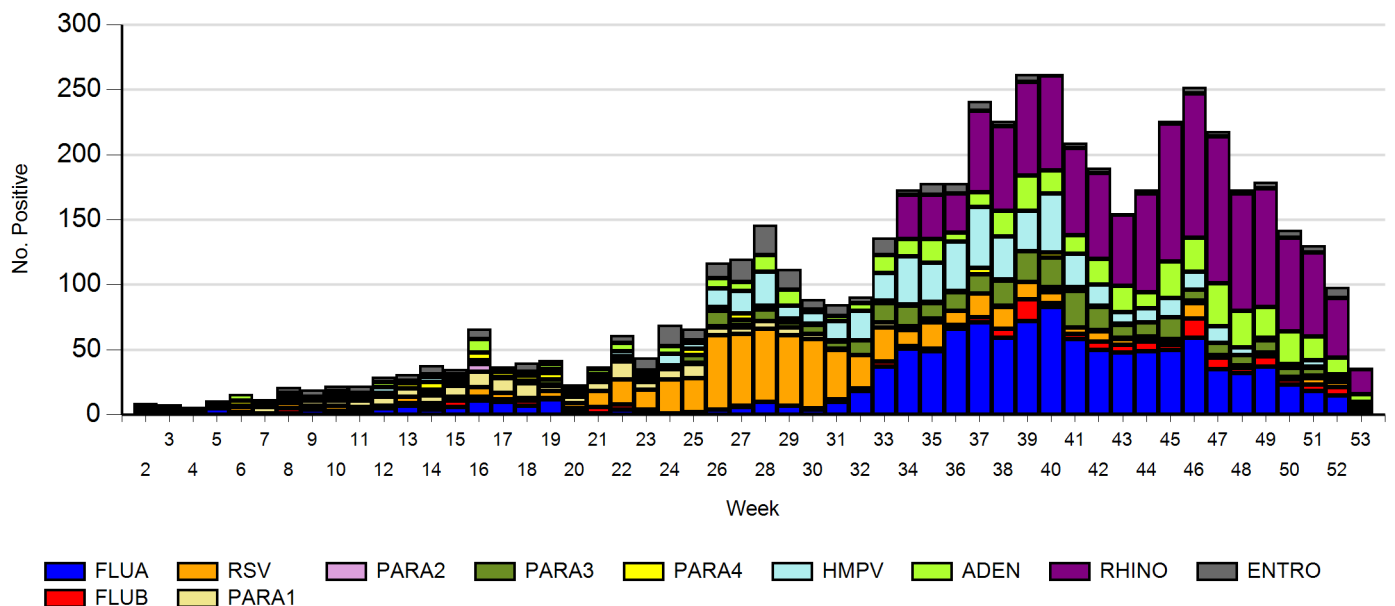


Figure 2b. All Respiratory Viruses by Week for 2016 (Line Graph)

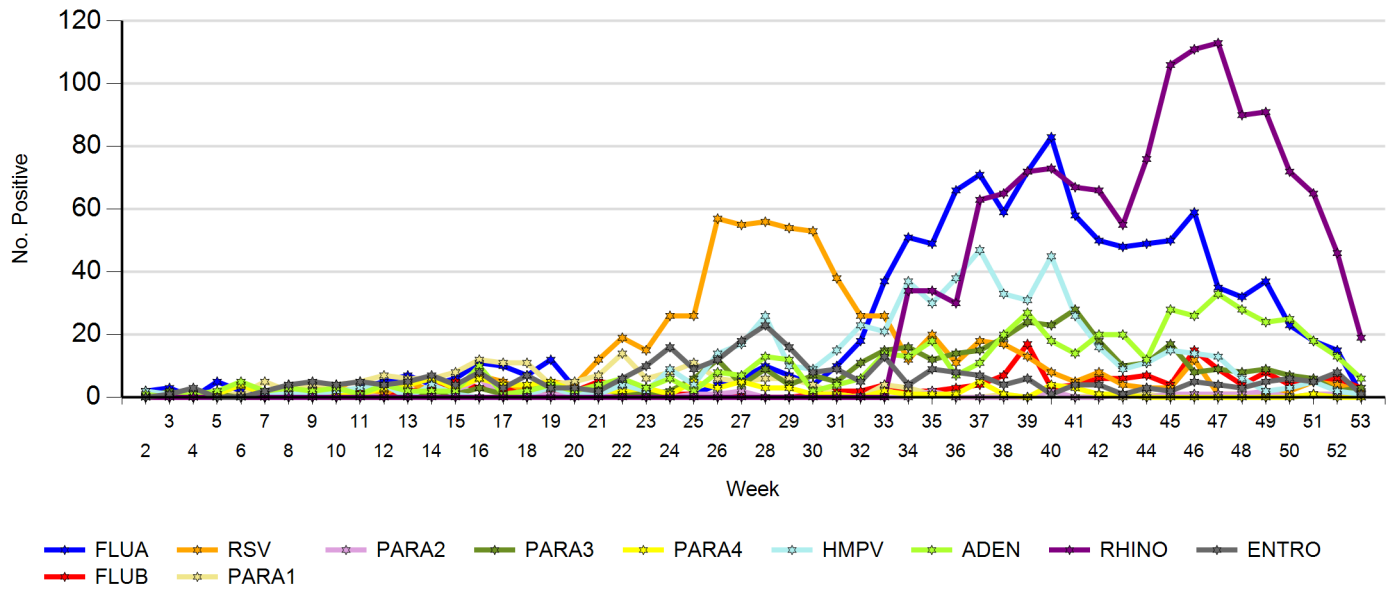


Figure 3. Positive Influenza viruses by Age Group for 2016

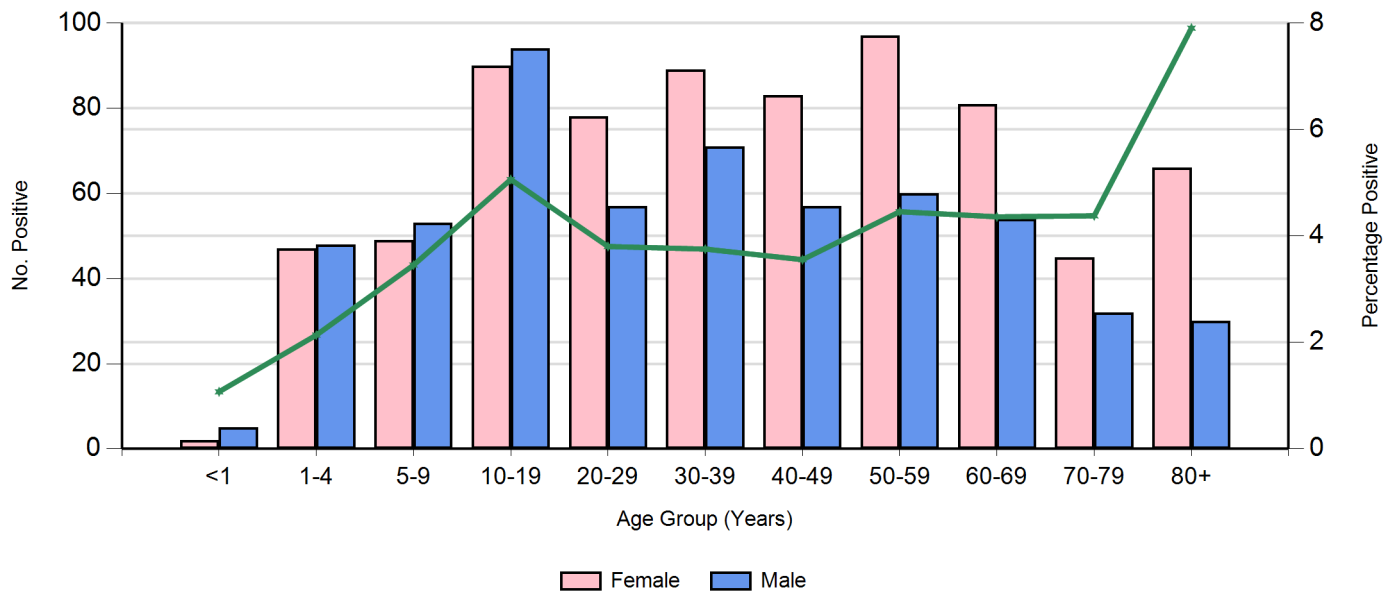
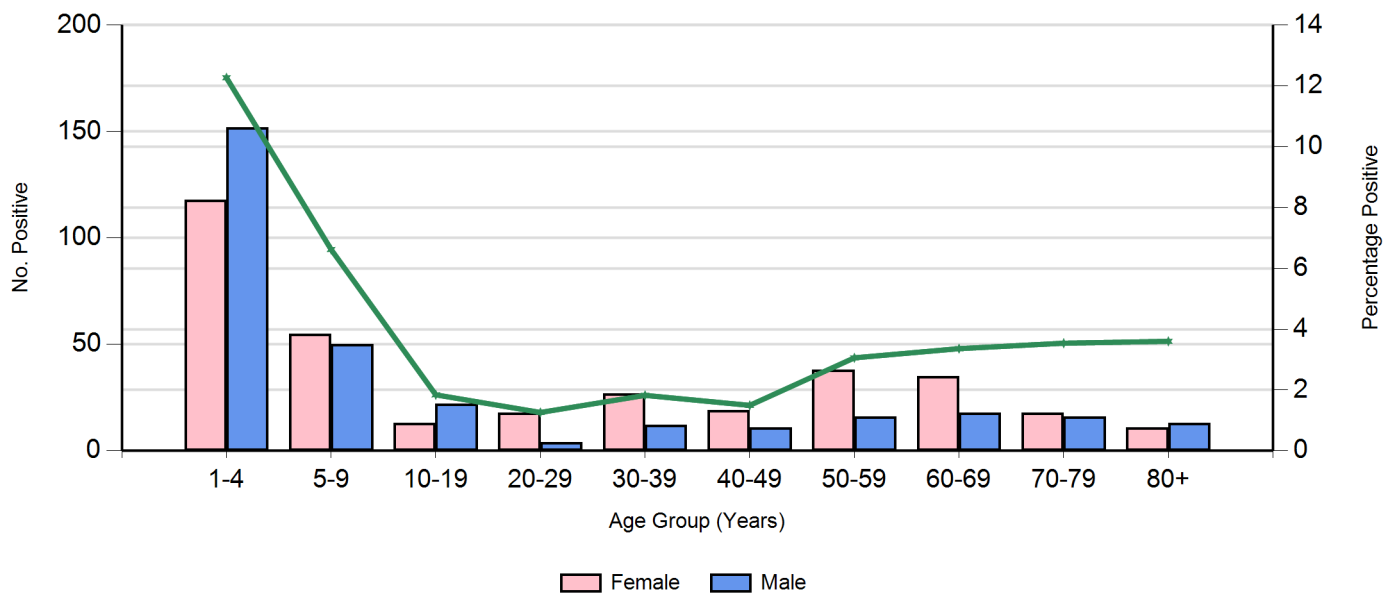
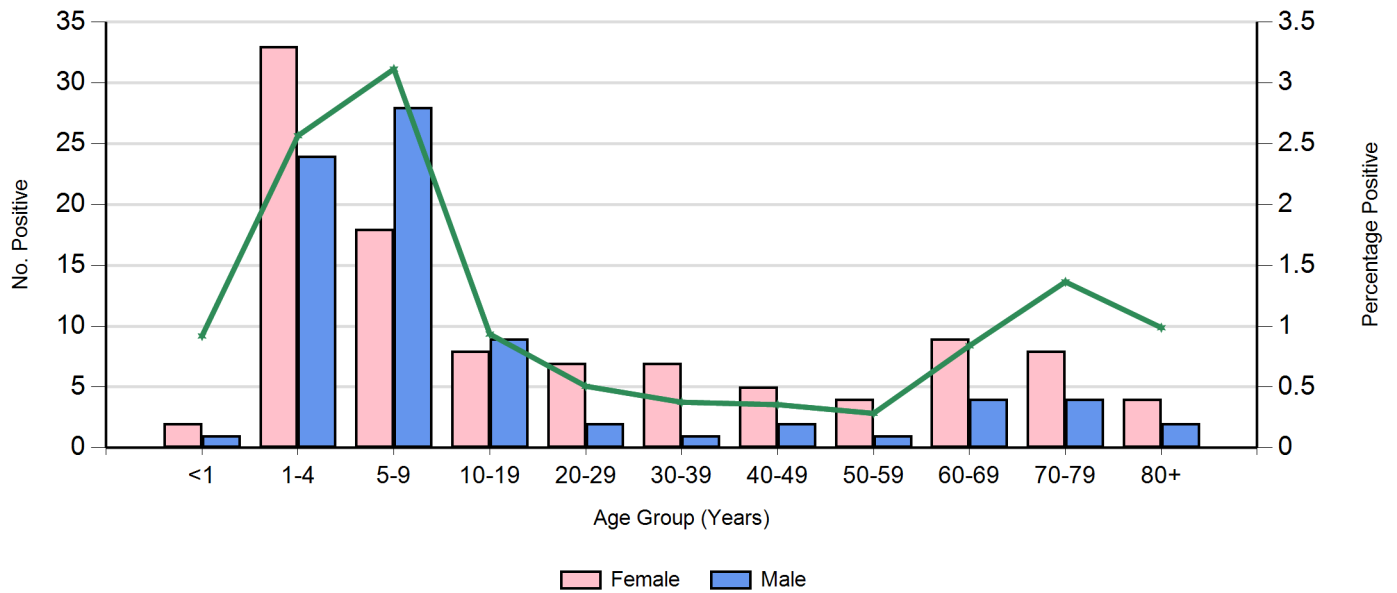


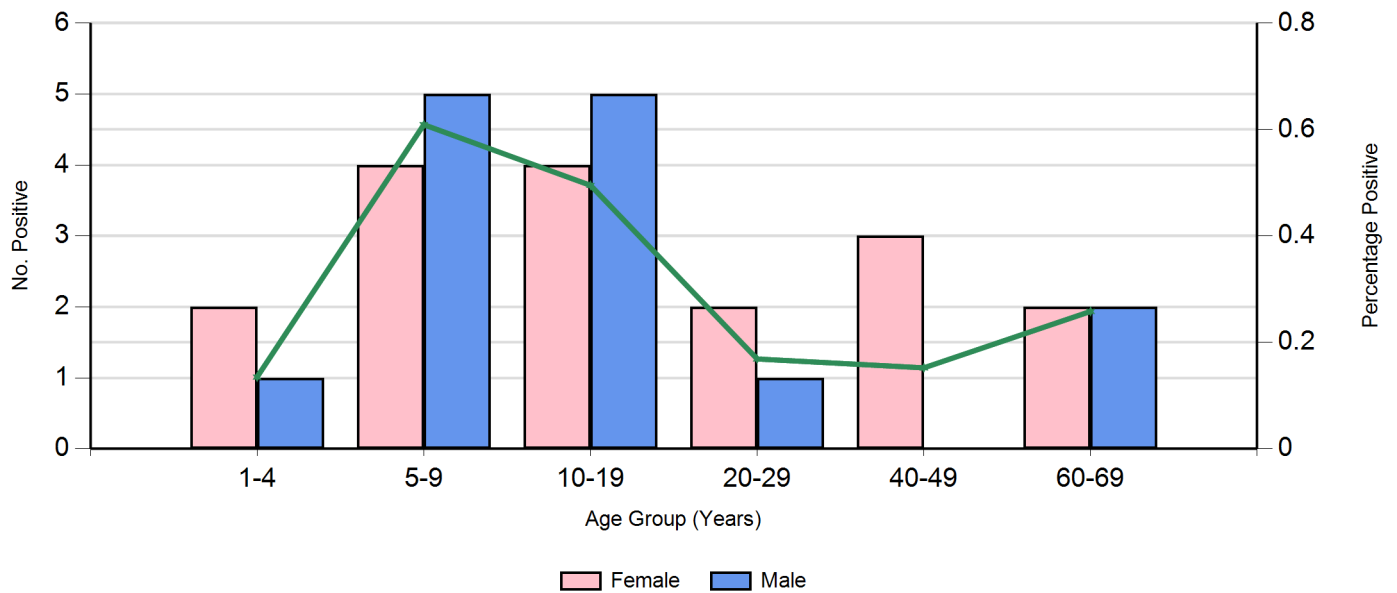
Figure 4. Positive RSV by Age Group for 2016



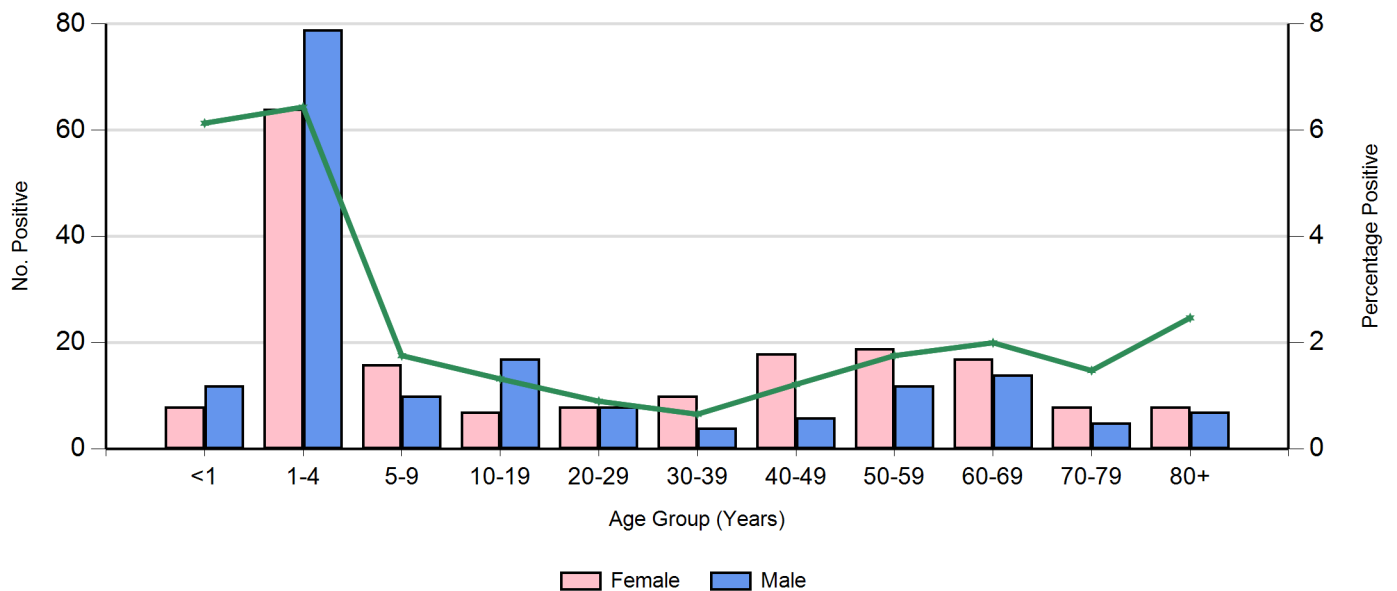
**Figure 5. Positive Parainfluenza 1 by Age Group for 2016**



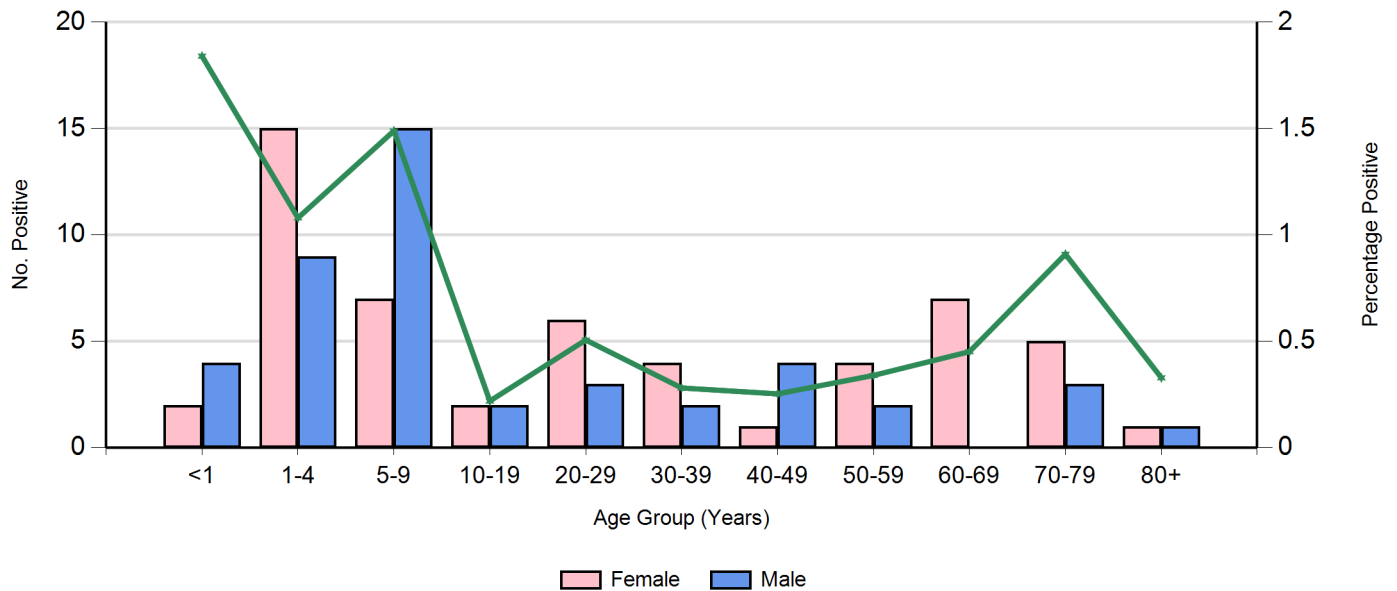
**Figure 6. Positive Parainfluenza 2 by Age Group for 2016**



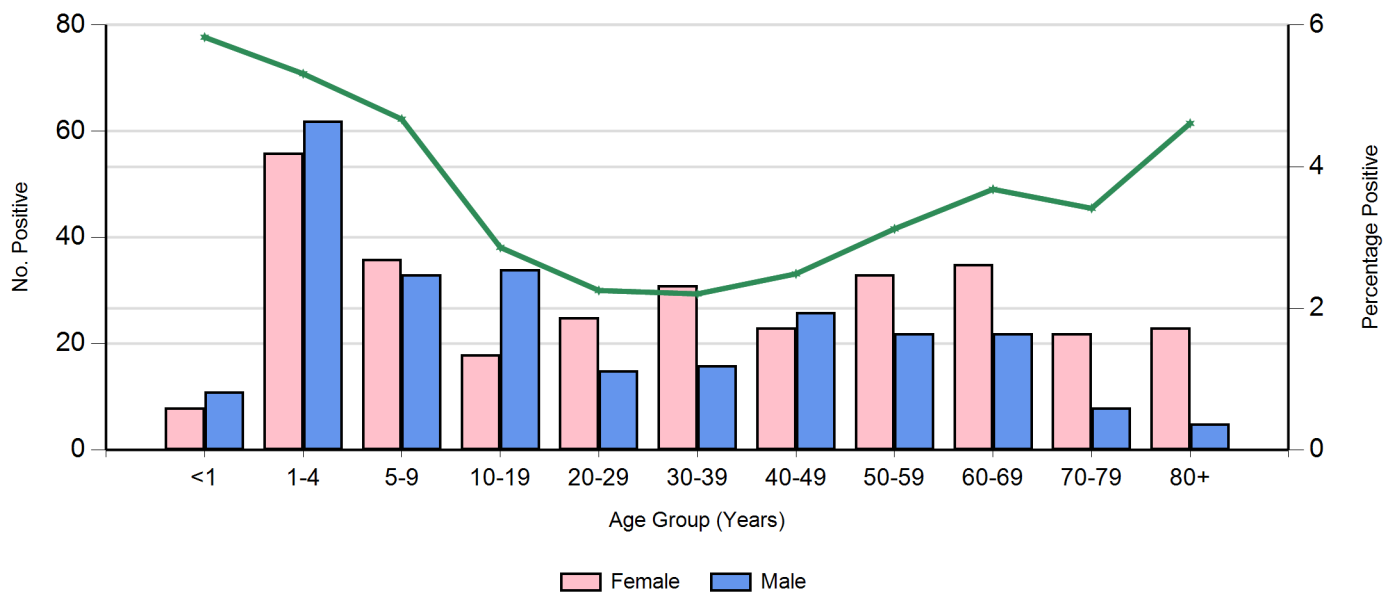
**Figure 7. Positive Parainfluenza 3 by Age Group for 2016**



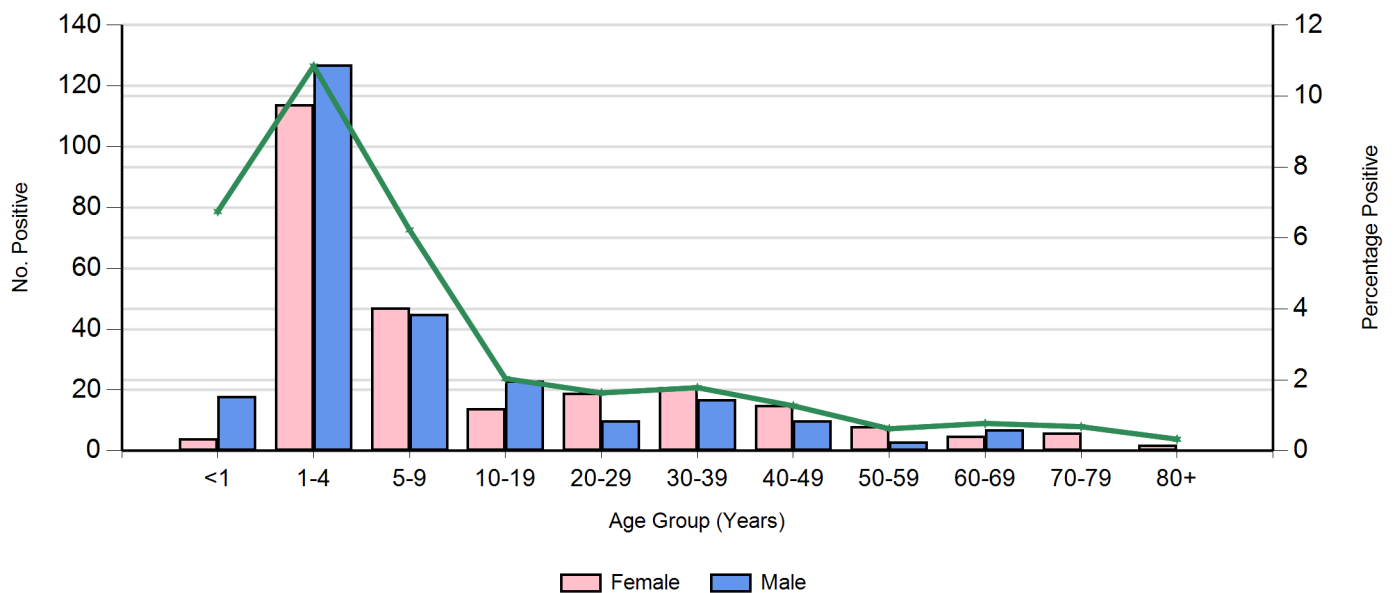
**Figure 8. Positive Parainfluenza 4 by Age Group for 2016**



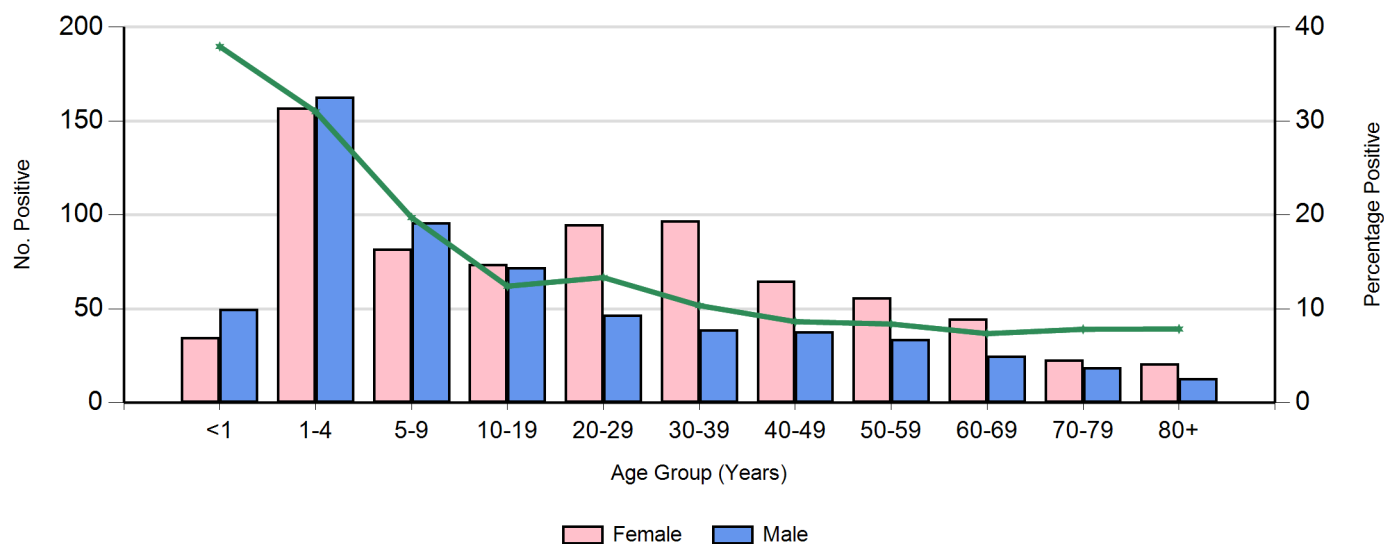
**Figure 9. Positive Human Metapneumovirus by Age Group for 2016**



**Figure 10. Positive Adenovirus by Age Group for 2016**



**Figure 11. Positive Rhinovirus by Age Group for 2016**



\*Rhinovirus testing commenced 17/09/2016

**Table 2. Regions**

Metropolitan	Southern	Eastern	Northern	Rural	Western
Adelaide Hills	South East	Murray region	Far North	North	Eyre Peninsula
Eastern Suburbs	Kangaroo Island	East	Barossa region	North East	Yorke Peninsula
Southern Suburbs	Fleurieu	Riverland		Far West/North West	
Western Suburbs					
Central					
Northern suburbs					

**Figure 12. Influenza Viruses by Week and Region for 2016**

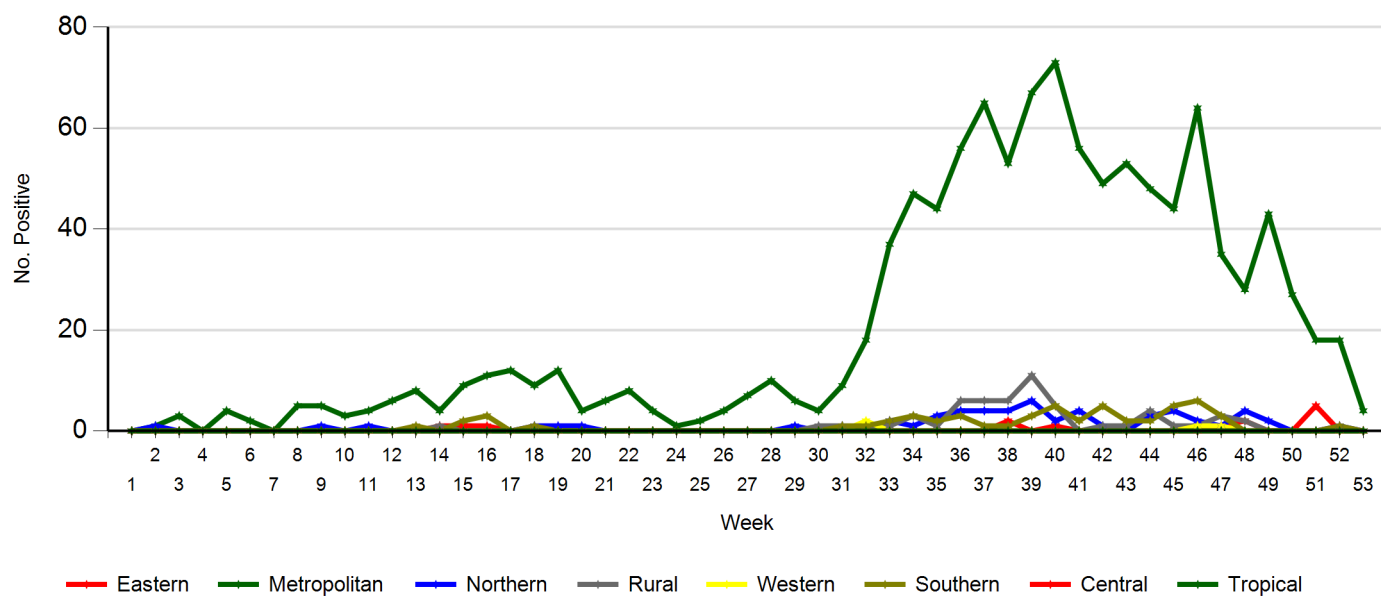


Figure 13. Positive RSV by Week and Region for 2016

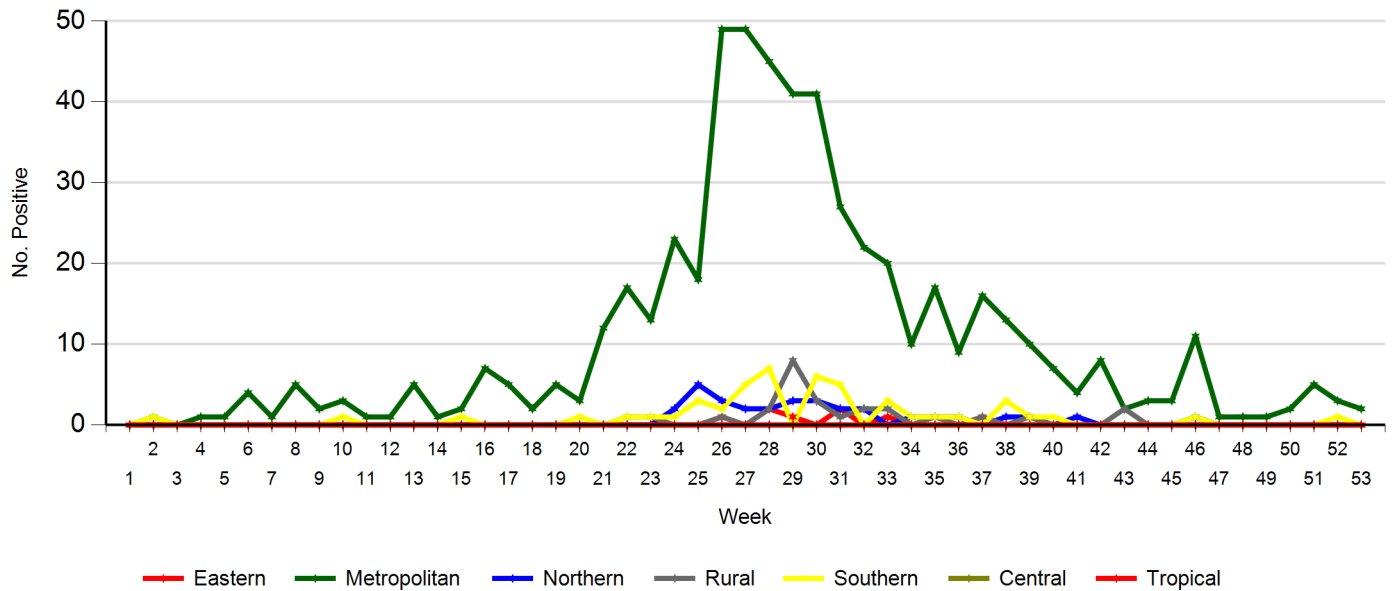


Figure 14. Positive Parainfluenza 1 by Week and Region for 2016

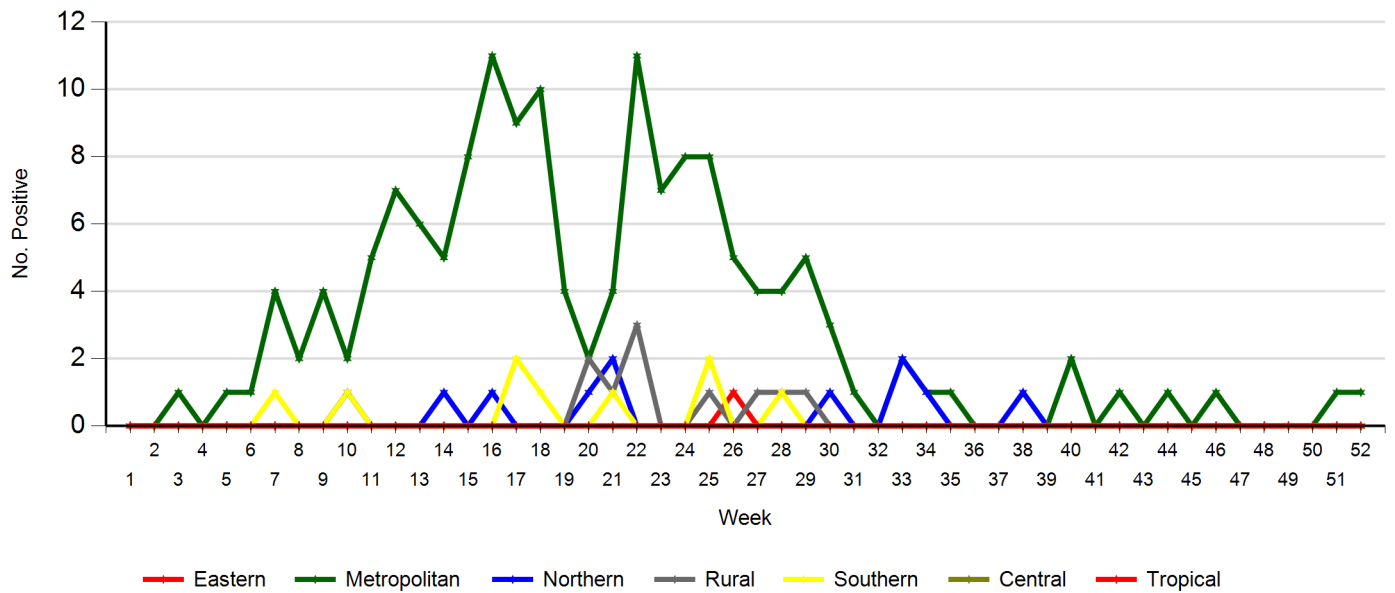
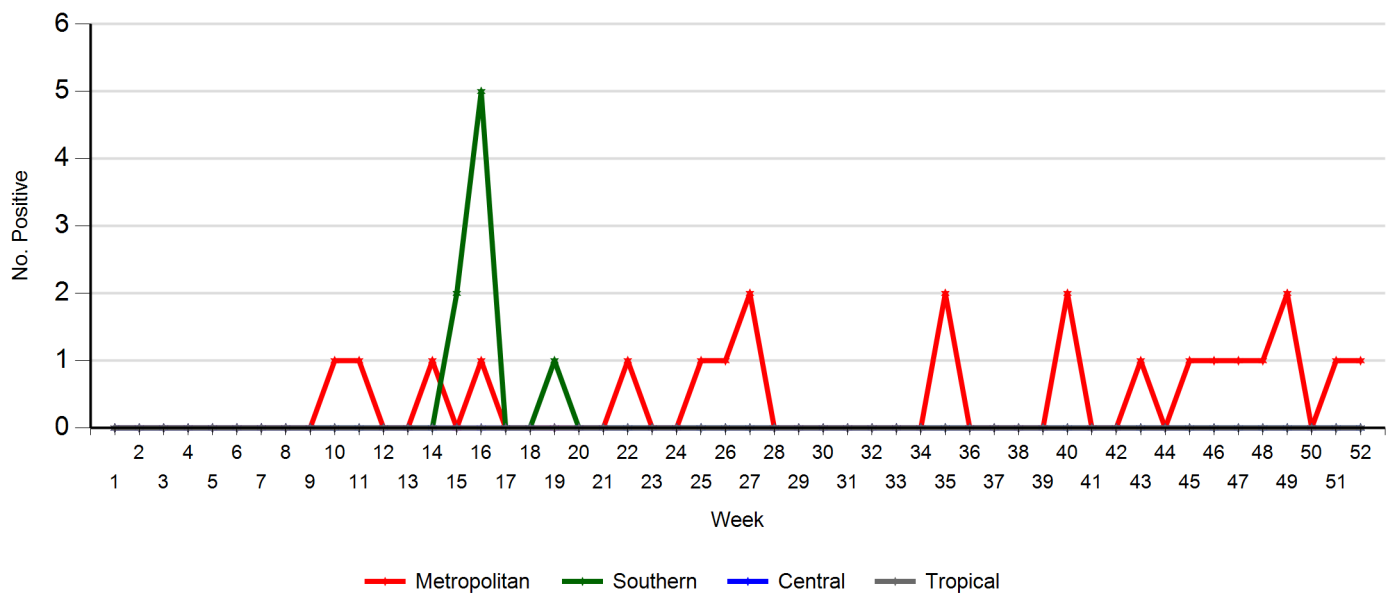
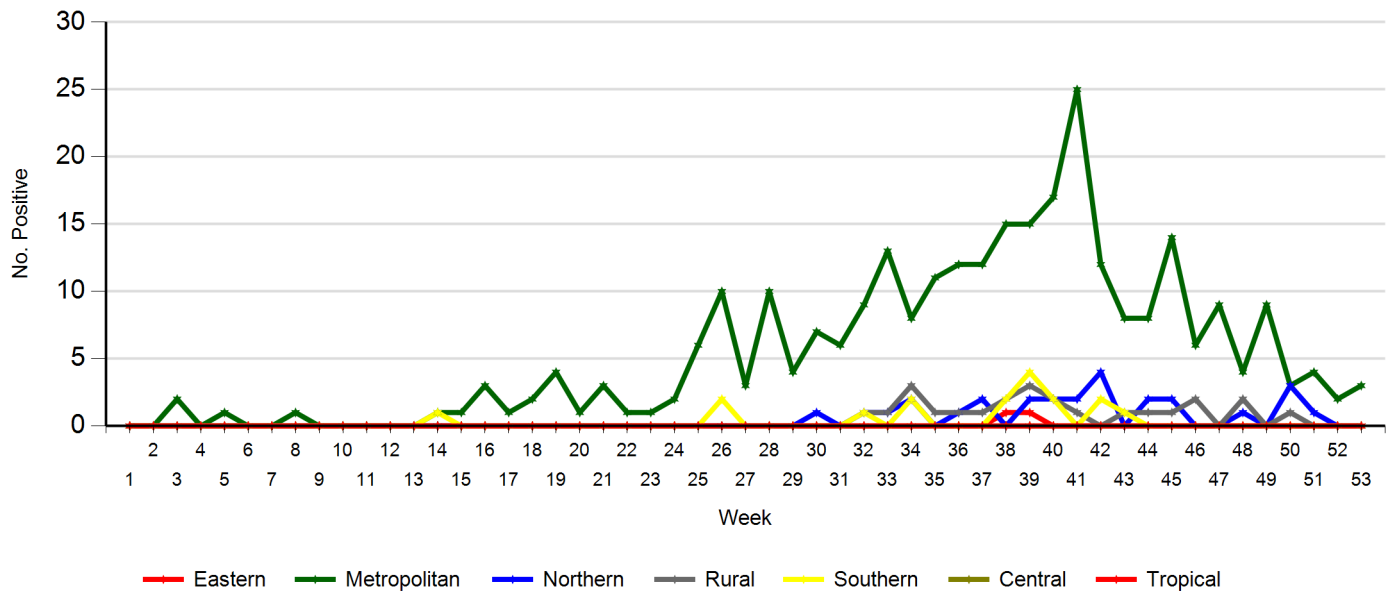


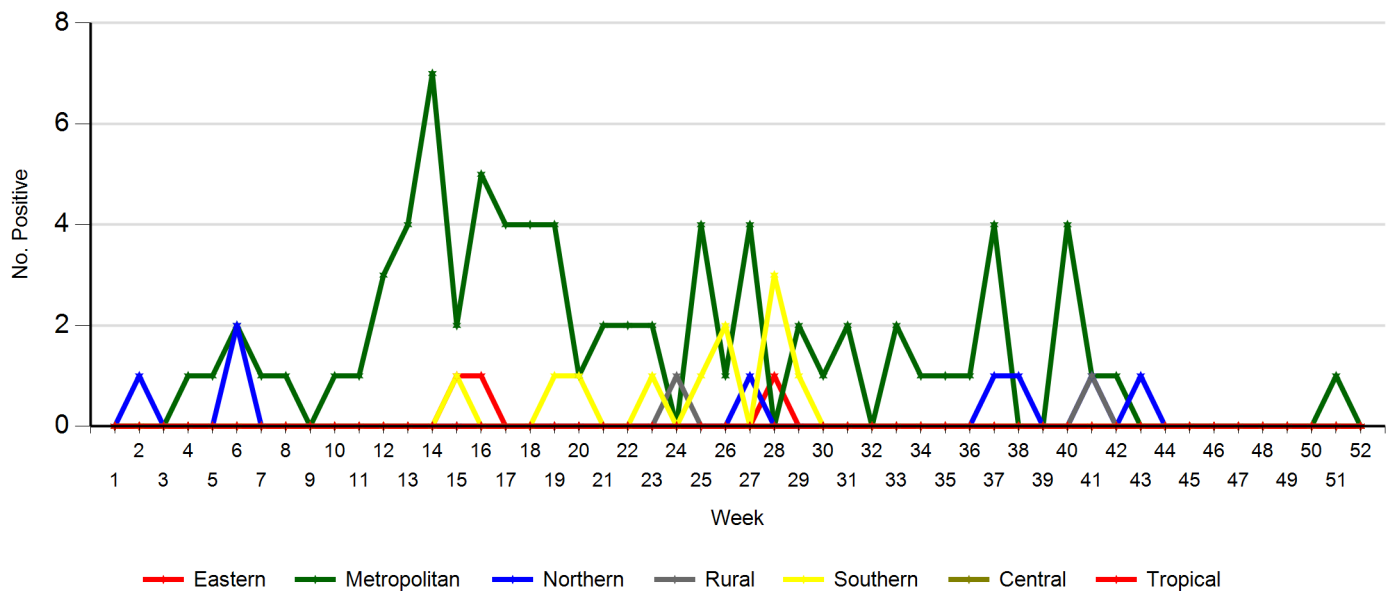
Figure 15. Positive Parainfluenza 2 by Week and Region for 2016



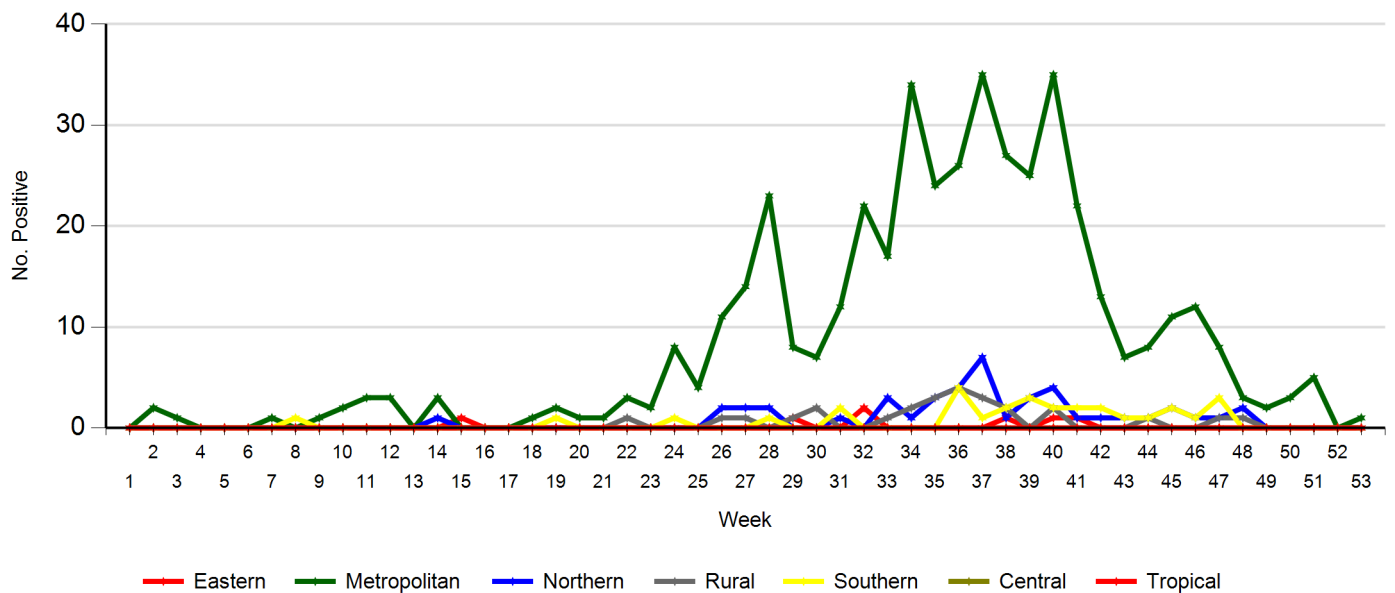
**Figure 16. Positive Parainfluenza 3 by Week and Region for 2016**



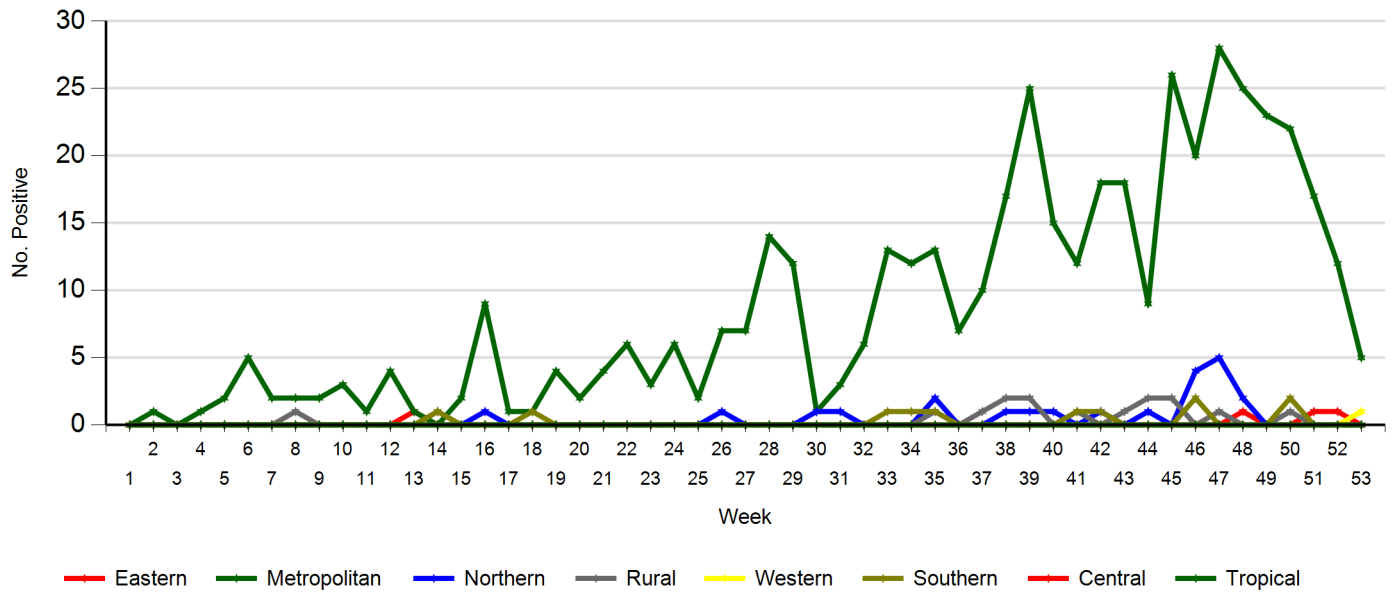
**Figure 17. Positive Parainfluenza 4 by Week and Region for 2016**



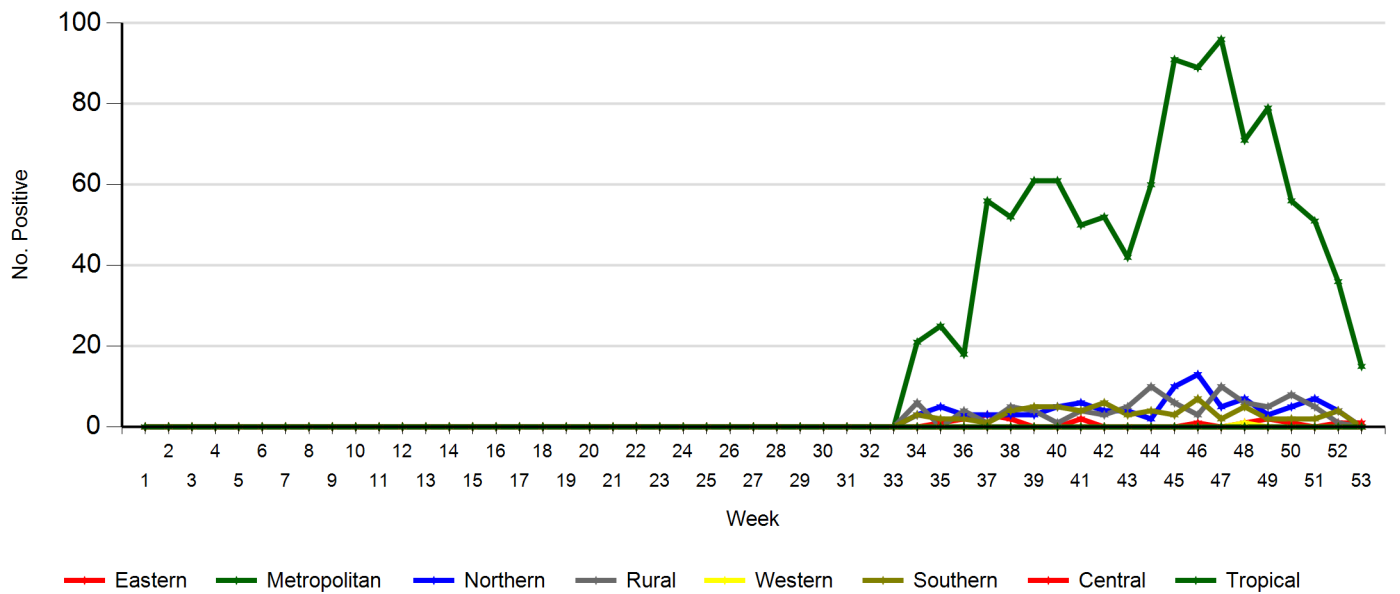
**Figure 18. Positive Human Metapneumovirus by Week and Region for 2016**



**Figure 19. Positive Adenovirus by Week and Region for 2016**



**Figure 20. Positive Rhinovirus by Week and Region for 2016**





## Cumulative Respiratory Virus Reports: Table of contents

Figure1: Weekly influenza notifications by type and percentage of positive tests by week of testing. Referred testing from all jurisdictions is included.

Table 1: Weekly notifications of influenza viruses by type (influenza A, influenza B) and week.

Figure 2a: Weekly notifications of all respiratory viruses by type (influenza A, influenza B, RSV, Parainfluenza 1234, HMPV) - stacked. Referred testing from all jurisdictions is included.

Figure 2b: Weekly notifications of all respiratory viruses by type (influenza A, influenza B, RSV, Parainfluenza 1234, HMPV) - line graph. Referred testing from all jurisdictions is included.

Figure 3: YTD Weekly notifications of influenza (FLUA&B) by age group and gender.

Figure 4: YTD Weekly notifications Respiratory Syncytial Virus (RSV) by age group and gender.

Figure 5: YTD Weekly notifications Parainfluenza 1 virus (PARA1) by age group and gender.

Figure 6: YTD Weekly notifications Parainfluenza 2 virus (PARA2) by age group and gender.

Figure 7: YTD Weekly notifications Parainfluenza 3 virus (PARA3) by age group and gender.

Figure 8: YTD Weekly notifications Parainfluenza 4 virus (PARA4) by age group and gender.

Figure 9: YTD Weekly notifications Human Metapneumovirus (HMPV) by age group and gender.

Figure 10: YTD Weekly notifications Adenovirus virus (ADEN) by age group and gender.

Figure 11: YTD Weekly notifications Rhinovirus virus (RHINO) by age group and gender.

Table 2: Regions table South Australia.

Figure 12: Influenza notifications by week of testing and region.

Figure 13: Respiratory Syncytial Virus (RSV) notifications by week of testing and region.

Figure 14: Parainfluenza 1 virus (PARA1) by week of testing and region.

Figure 15: Parainfluenza 2 virus (PARA2) by week of testing and region.

Figure 16: Parainfluenza 3 virus (PARA3) by week of testing and region.

Figure 17: Parainfluenza 4 virus (PARA4) by week of testing and region.

Figure 18: Human Metapneumovirus (HMPV) by week of testing and region.

Figure 19: Adenovirus virus (ADEN) by week of testing and region.

Figure 20: Rhinovirus virus (RHINO) by week of testing and region.