



Respiratory Virus Report 2019

Figure 1. Positive Influenza Viruses by Week for 2019

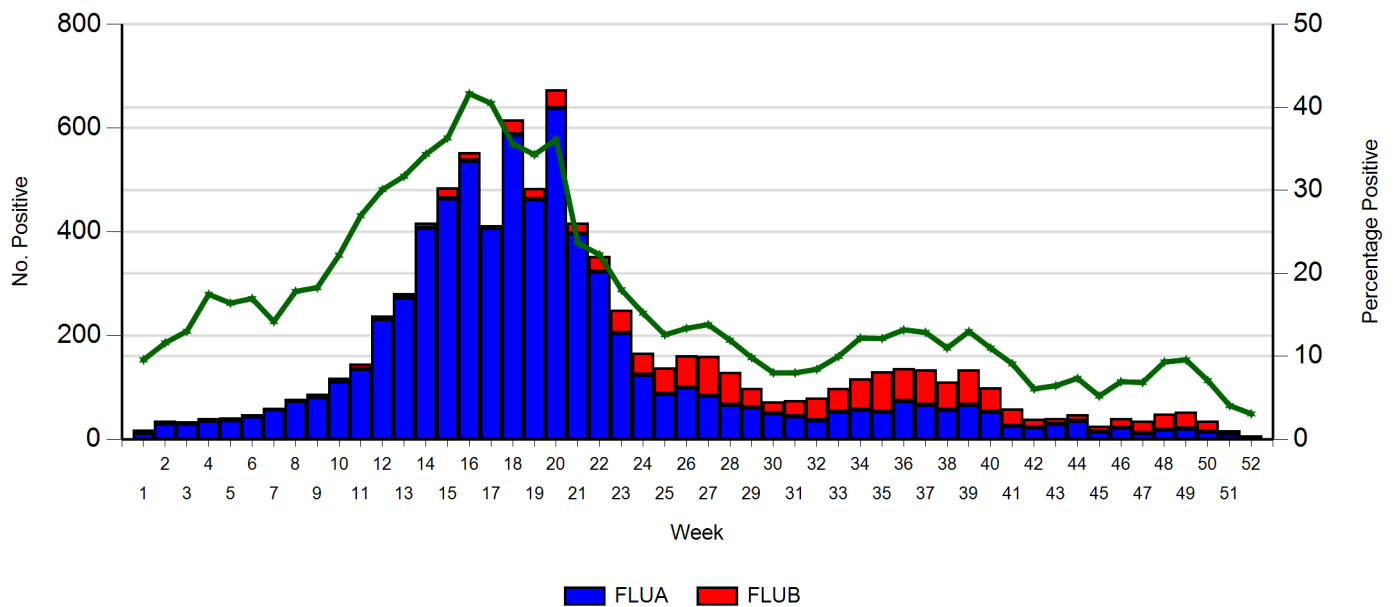


Table 1. Influenza Viruses by week for 2019

Week No.	1	2	3	4	5	6	7	8	9	10	11	12	13	14	15	16	17	18	19	20	21	22	23	24	25	26	27	28	29	30	31	32	33	34	35	36	37	38	39	40	41	42	43	44	45	46	47	48	49	50	51	52	Total
FLUA	12	31	31	36	37	44	58	74	81	111	135	232	273	407	465	537	407	588	463	639	397	324	205	124	88	100	84	66	62	50	44	37	53	56	53	74	66	57	66	53	26	23	29	36	14	22	12	18	21	14	10	5	6950
FLUB	6	5	3	4	5	4	2	3	6	7	10	6	8	10	21	17	6	28	21	36	21	29	44	43	50	62	76	63	36	22	31	43	46	61	78	63	68	54	68	47	33	16	11	12	12	19	24	31	32	21	7	2	1433
%Pos	10	12	13	17	16	17	14	18	18	22	27	30	32	34	36	42	40	36	34	36	24	22	18	15	13	13	14	12	10	8	8	8	10	12	12	13	13	11	13	11	9	6	6	7	5	7	7	9	10	7	4	3	
Total	18	36	34	40	42	48	60	77	87	118	145	238	281	417	486	554	413	616	484	675	418	353	249	167	138	162	160	129	98	72	75	80	99	117	131	137	134	111	134	100	59	39	40	48	26	41	36	49	53	35	17	7	8383

Figure 2a. All Positive Respiratory Viruses by Week for 2019 (Stacked Graph)

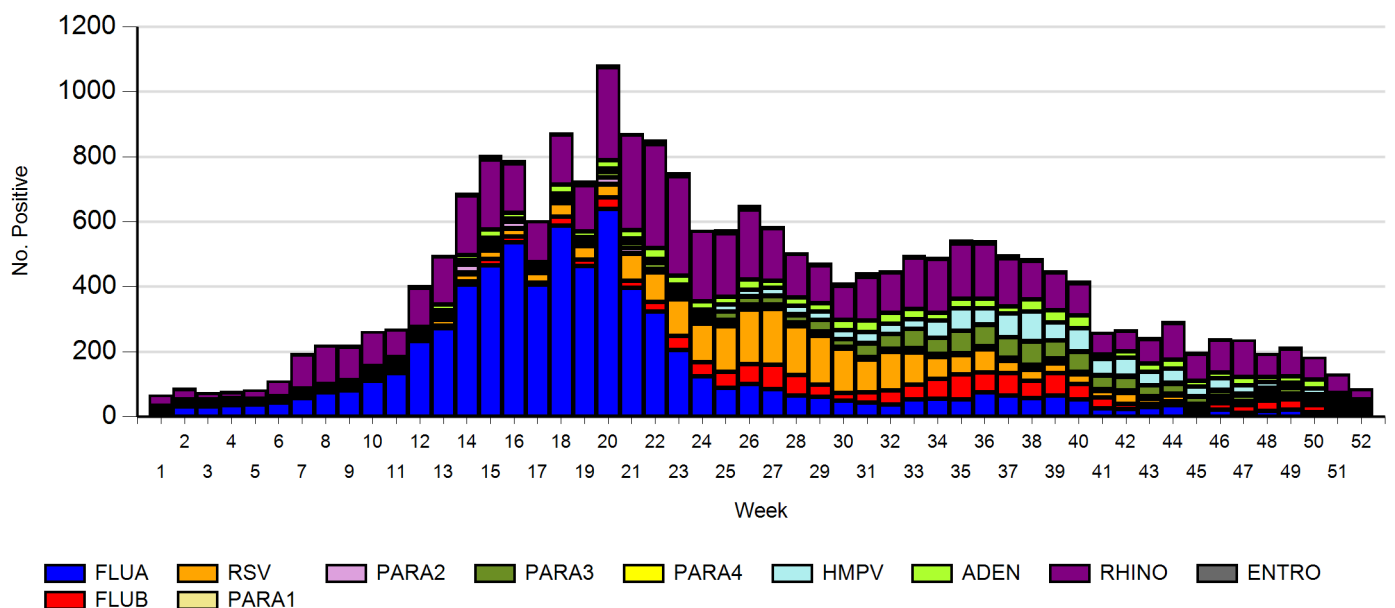


Figure 2b. All Respiratory Viruses by Week for 2019 (Line Graph)

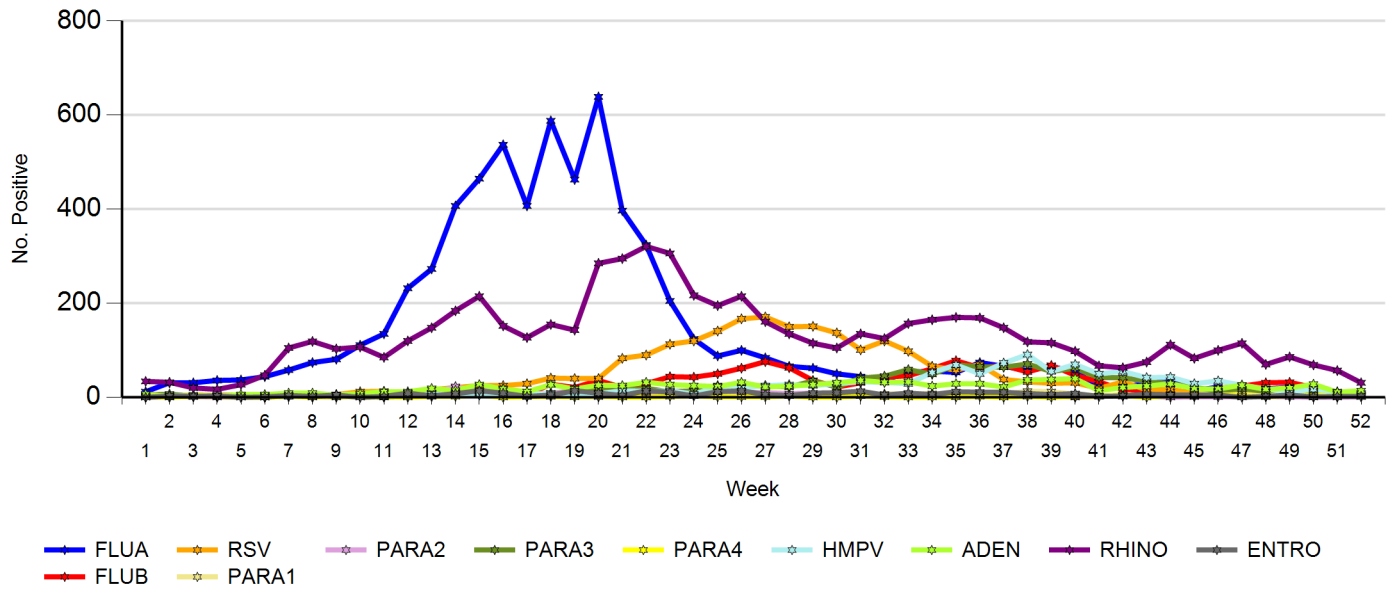


Figure 3. Positive Influenza viruses by Age Group for 2019

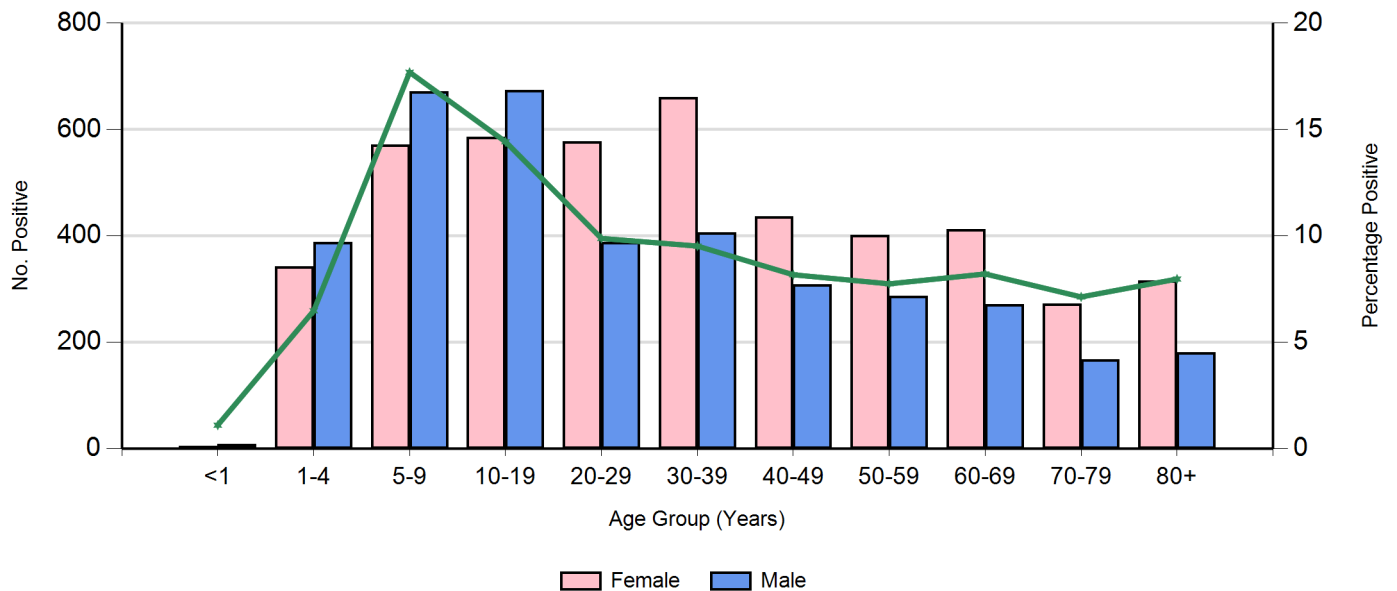


Figure 4. Positive RSV by Age Group for 2019

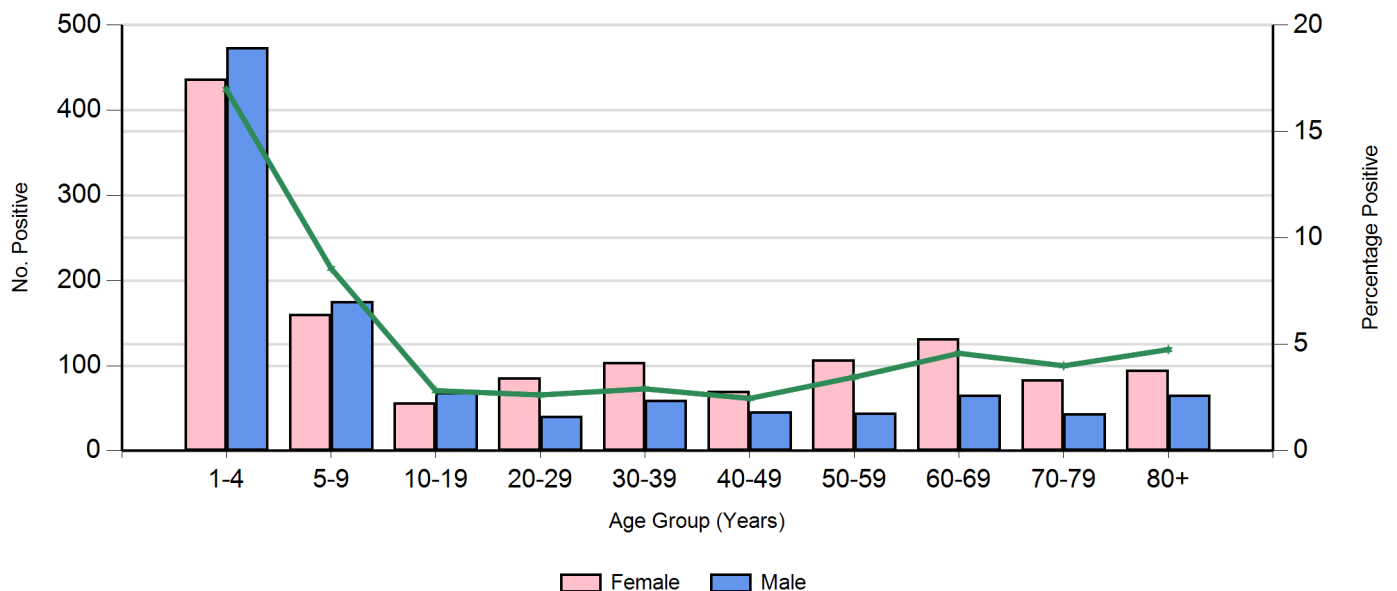


Figure 5. Positive Parainfluenza 1 by Age Group for 2019

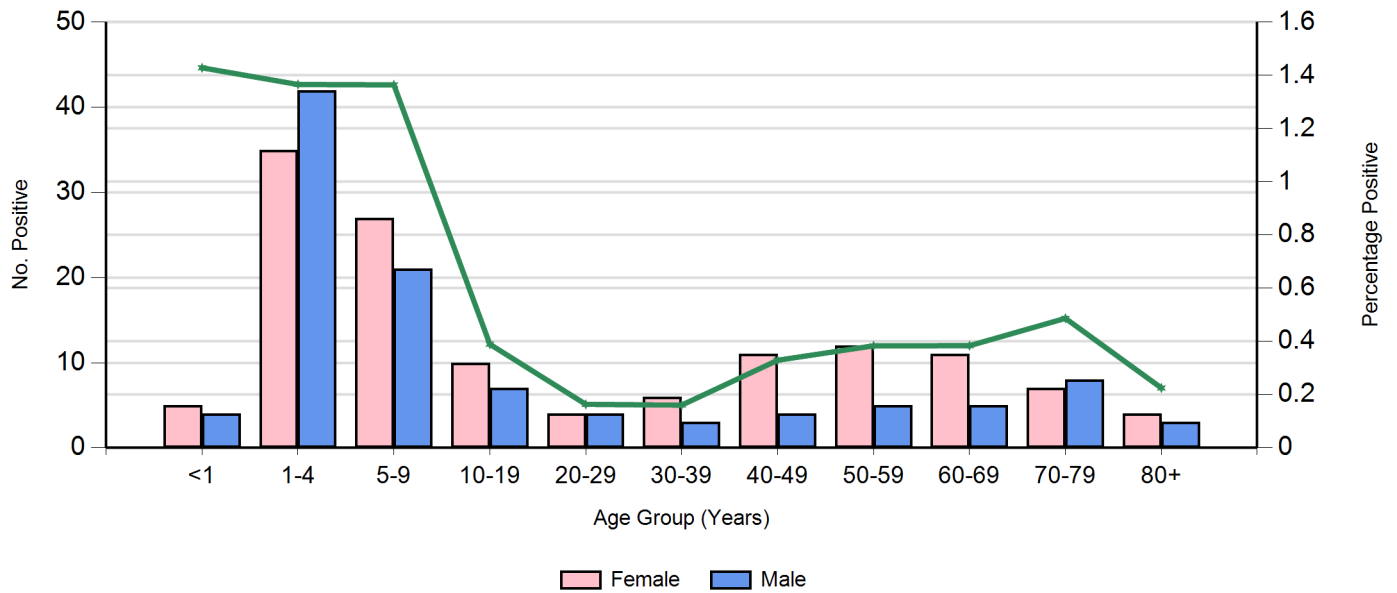


Figure 6. Positive Parainfluenza 2 by Age Group for 2019

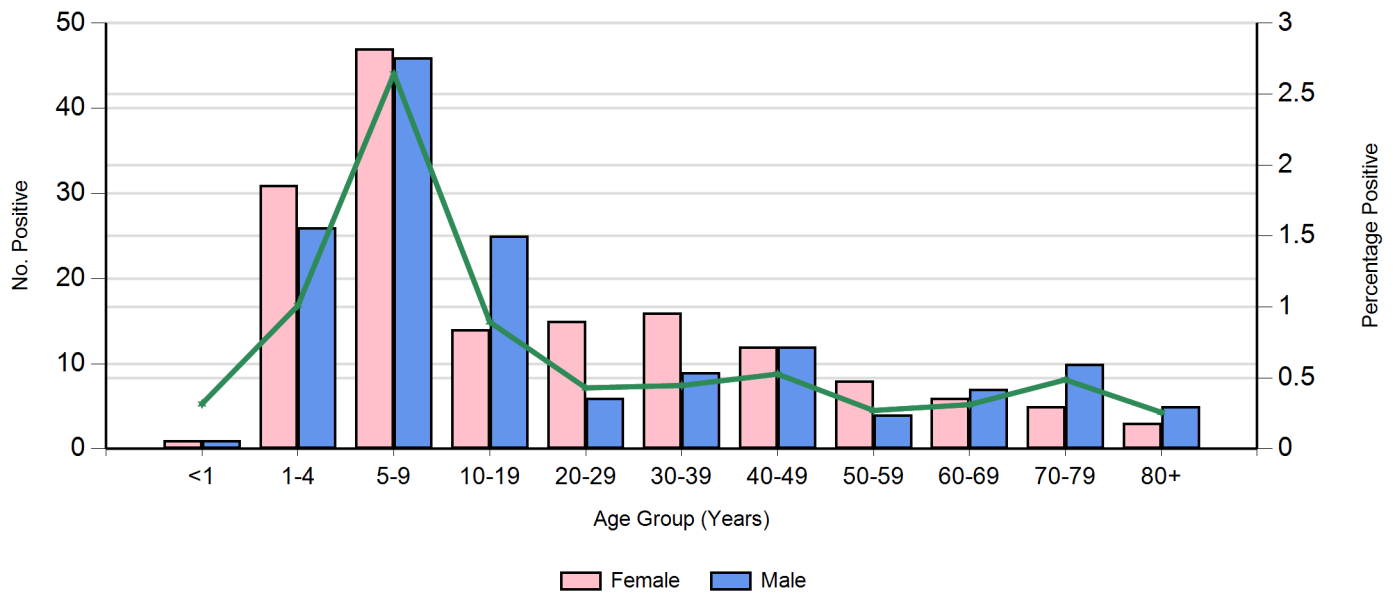


Figure 7. Positive Parainfluenza 3 by Age Group for 2019

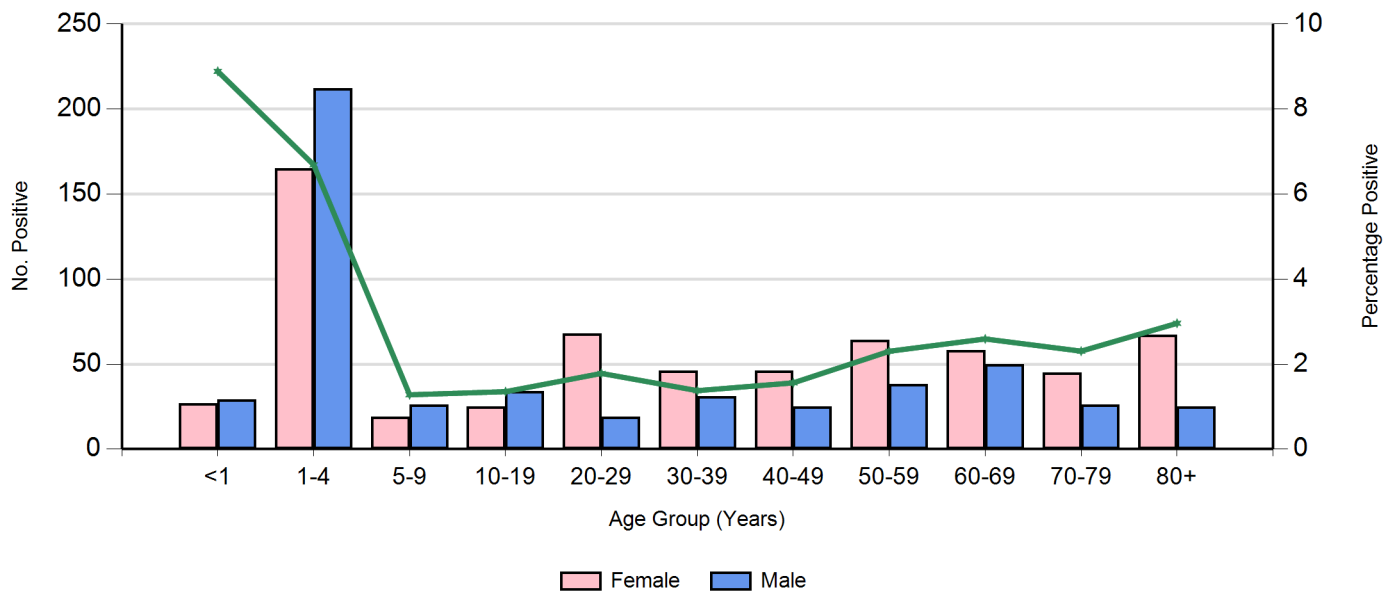


Figure 8. Positive Parainfluenza 4 by Age Group for 2019

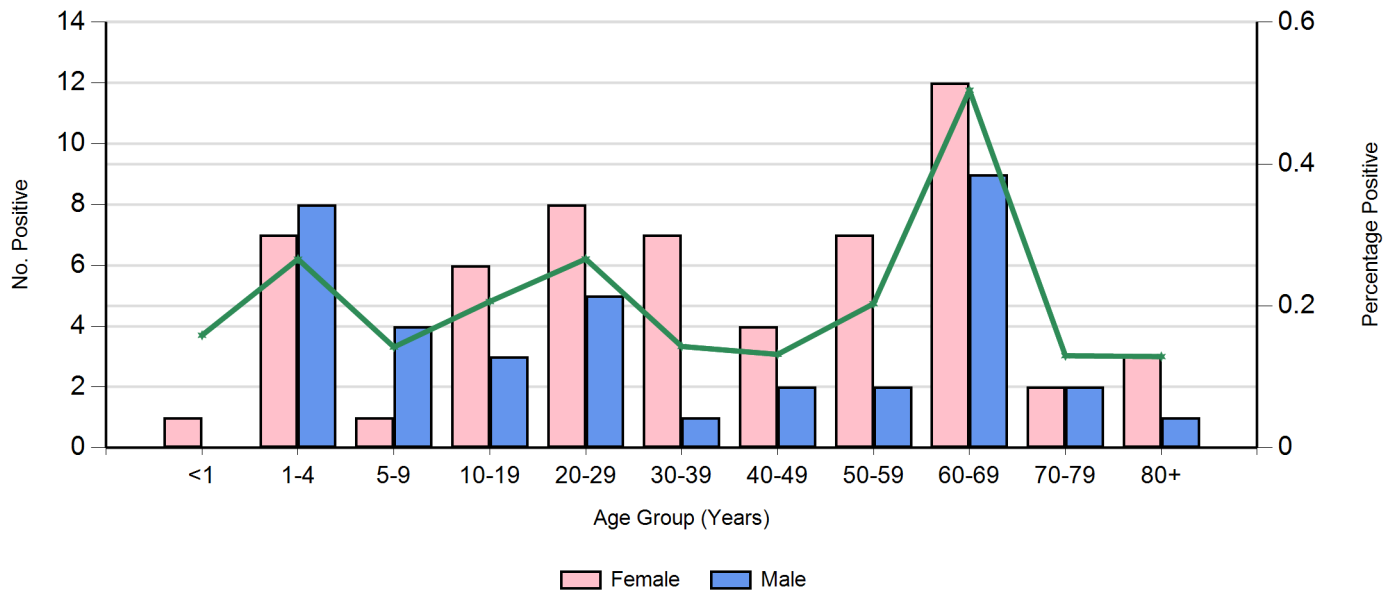


Figure 9. Positive Human Metapneumovirus by Age Group for 2019

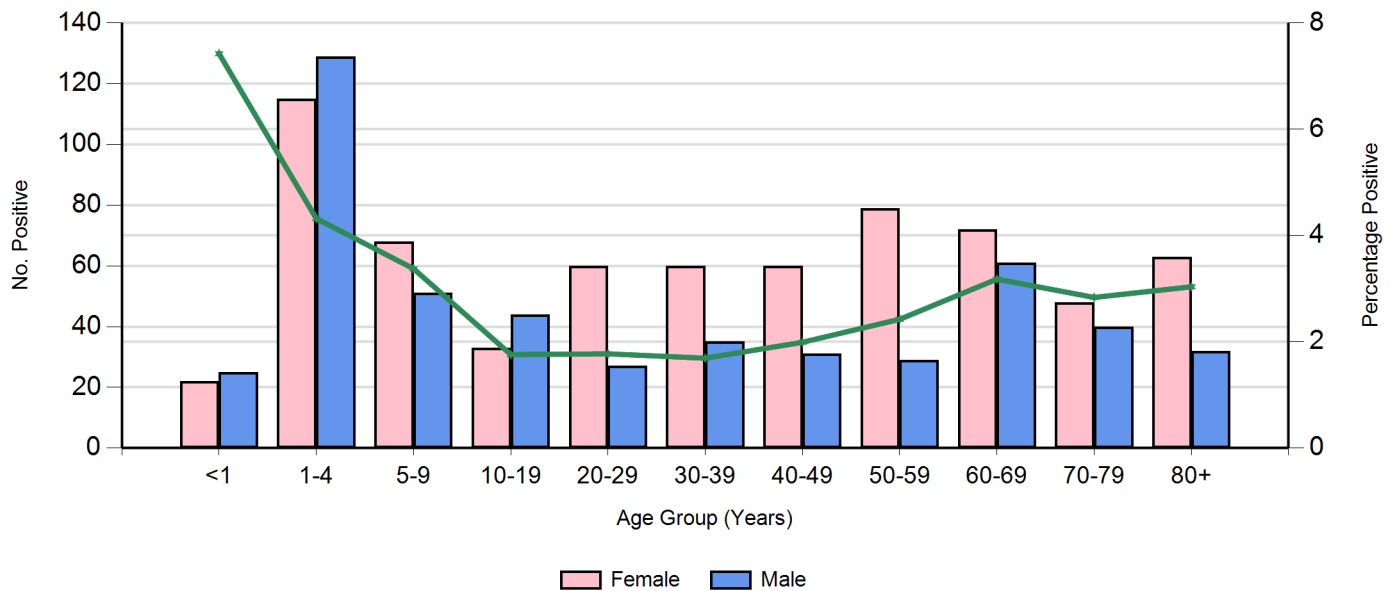


Figure 10. Positive Adenovirus by Age Group for 2019

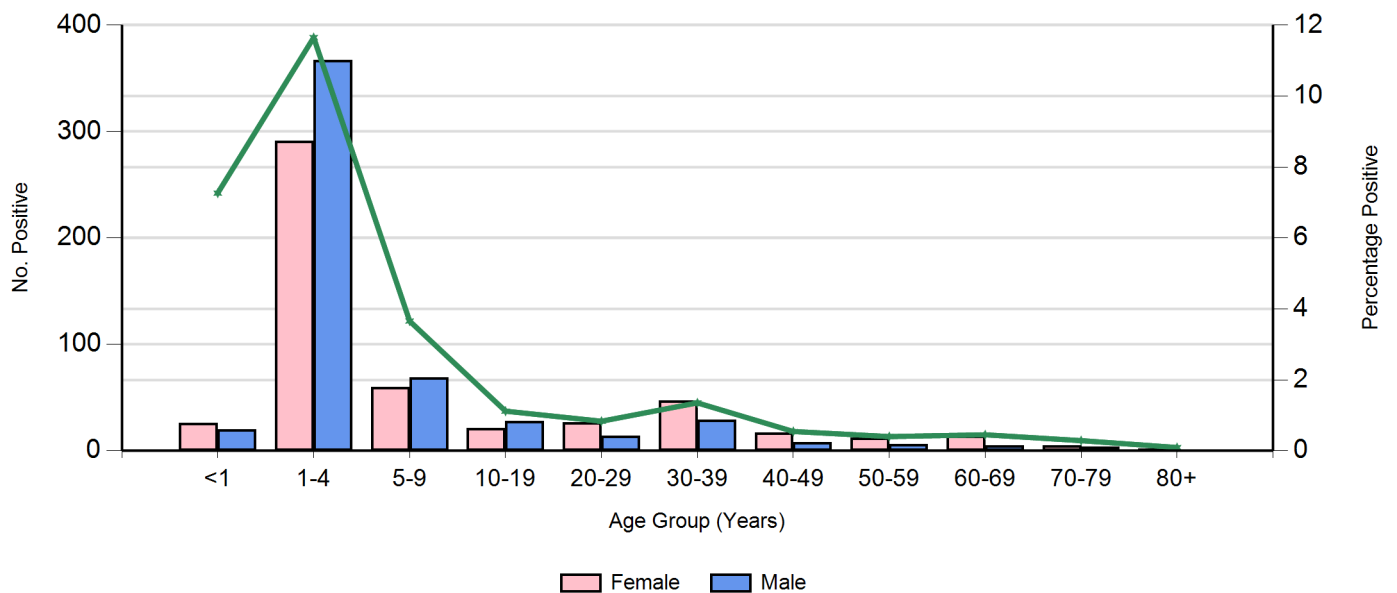
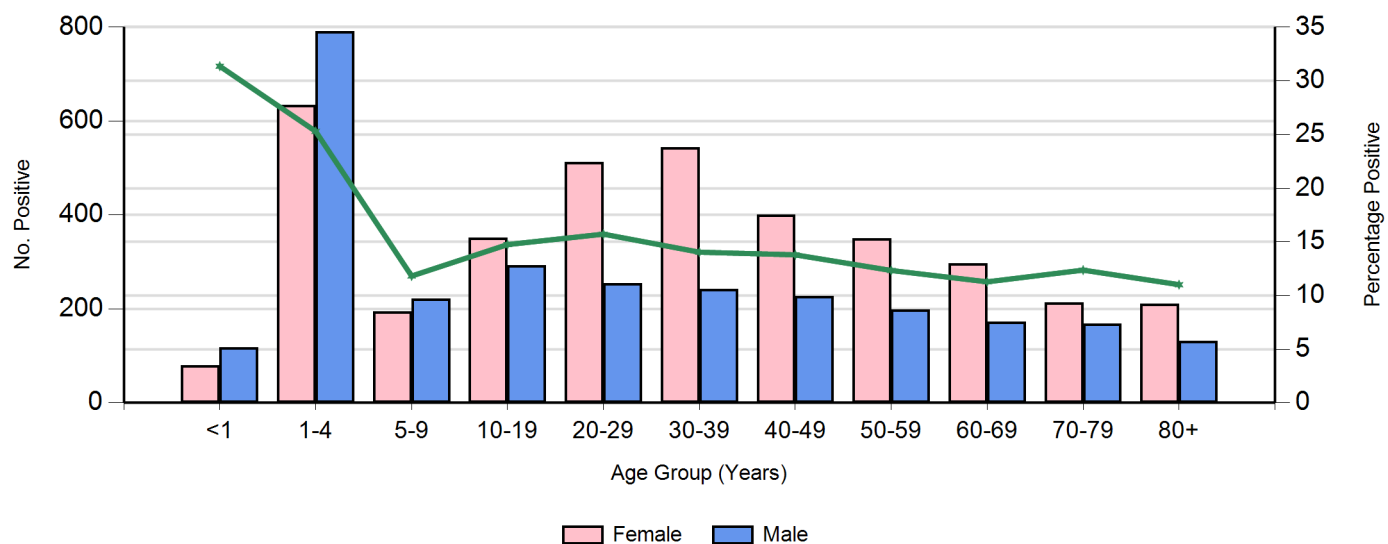


Figure 11. Positive Rhinovirus by Age Group for 2019



*Rhinovirus testing commenced 17/09/2016

Table 2. Regions

Metropolitan	Southern	Eastern	Northern	Rural	Western
Adelaide Hills	South East	Murray region	Far North	North	Eyre Peninsula
Eastern Suburbs	Kangaroo Island	East	Barossa region	North East	Yorke Peninsula
Southern Suburbs	Fleurieu	Riverland		Far West/North West	
Western Suburbs					
Central					
Northern suburbs					

Figure 12. Influenza Viruses by Week and Region for 2019

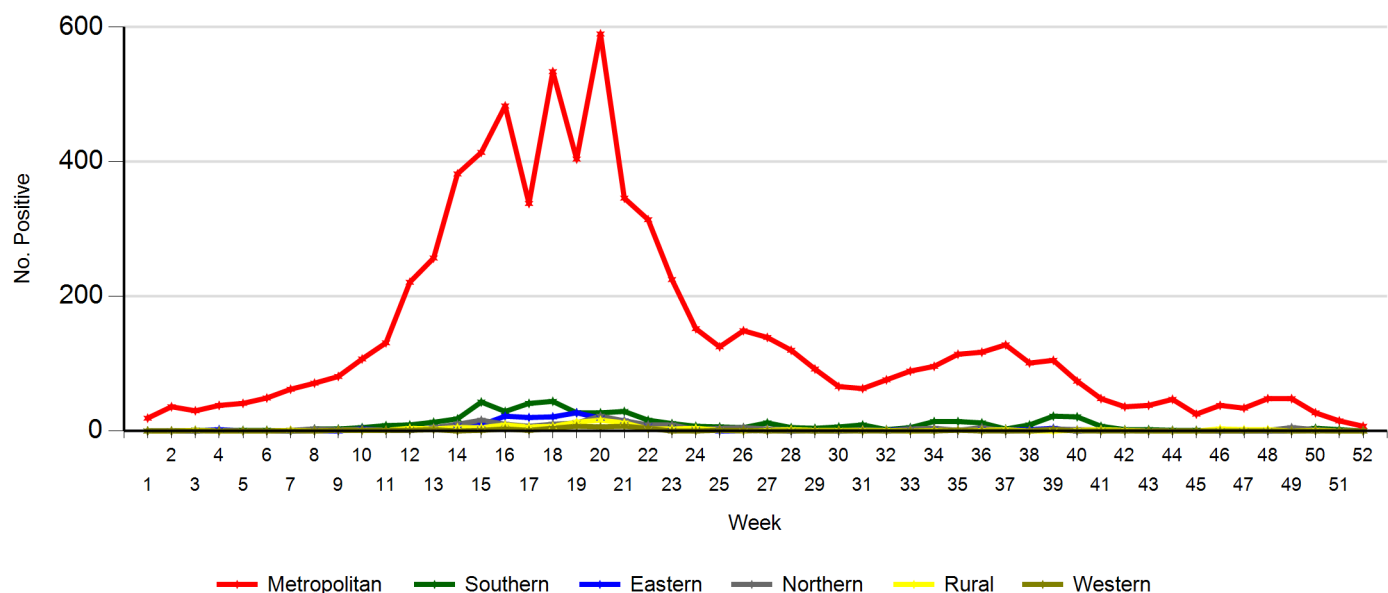


Figure 13. Positive RSV by Week and Region for 2019

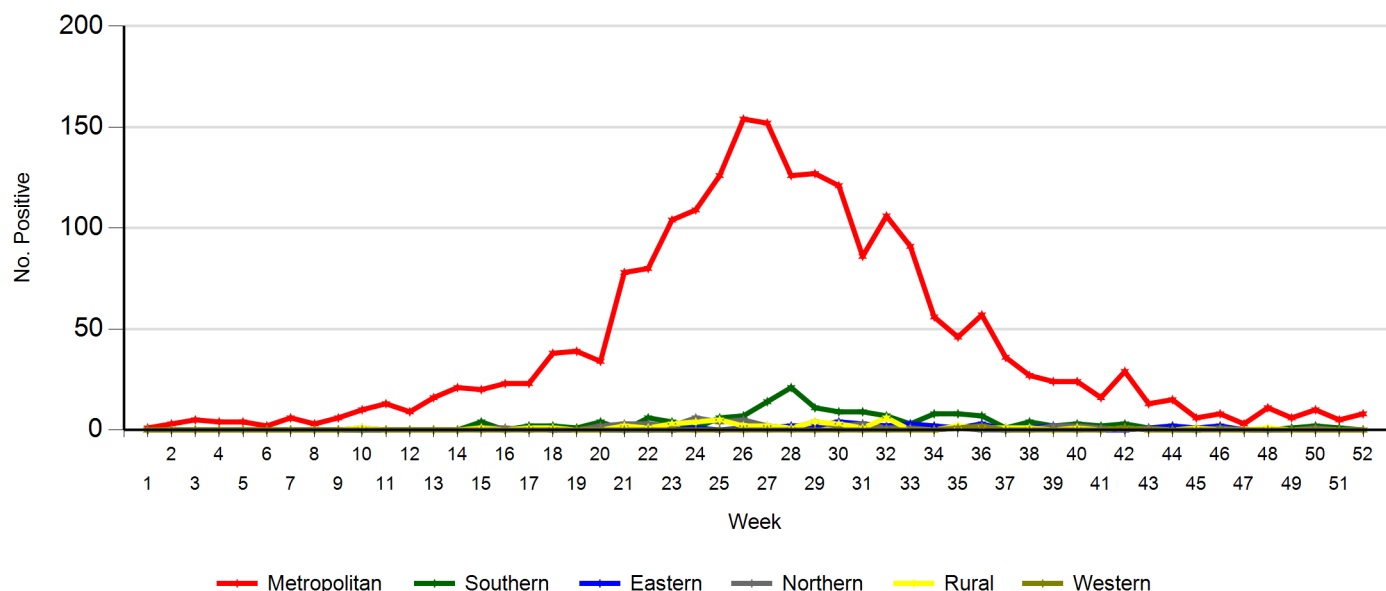


Figure 14. Positive Parainfluenza 1 by Week and Region for 2019

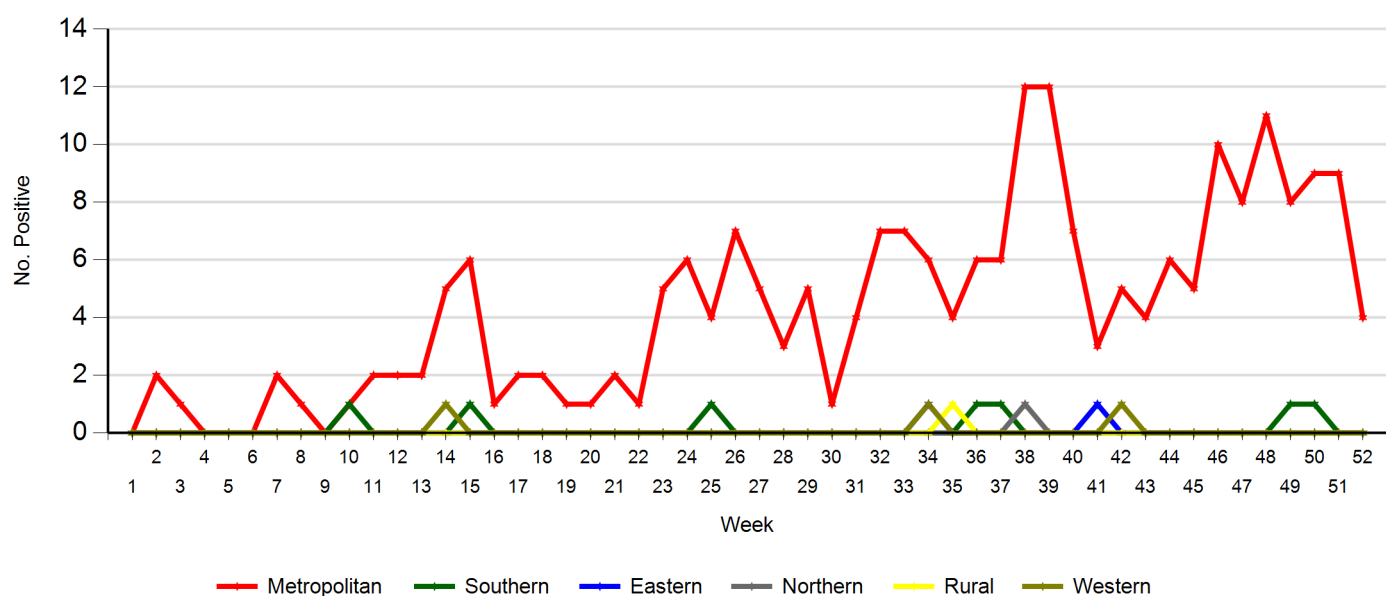


Figure 15. Positive Parainfluenza 2 by Week and Region for 2019

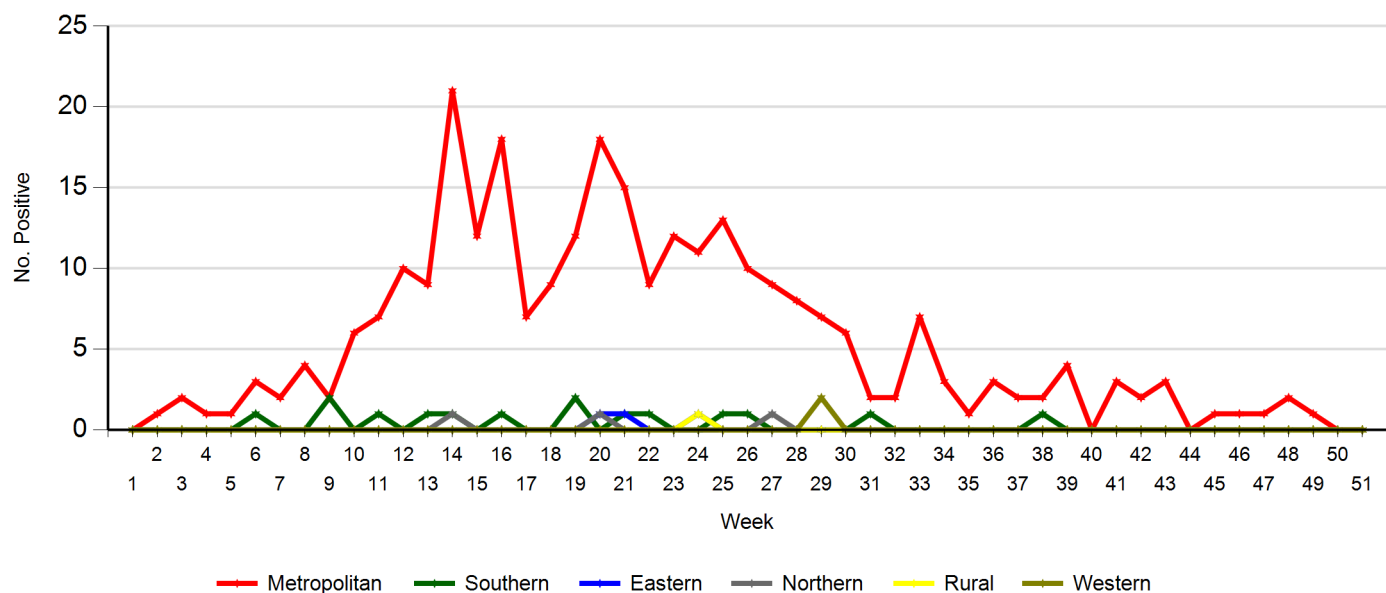


Figure 16. Positive Parainfluenza 3 by Week and Region for 2019

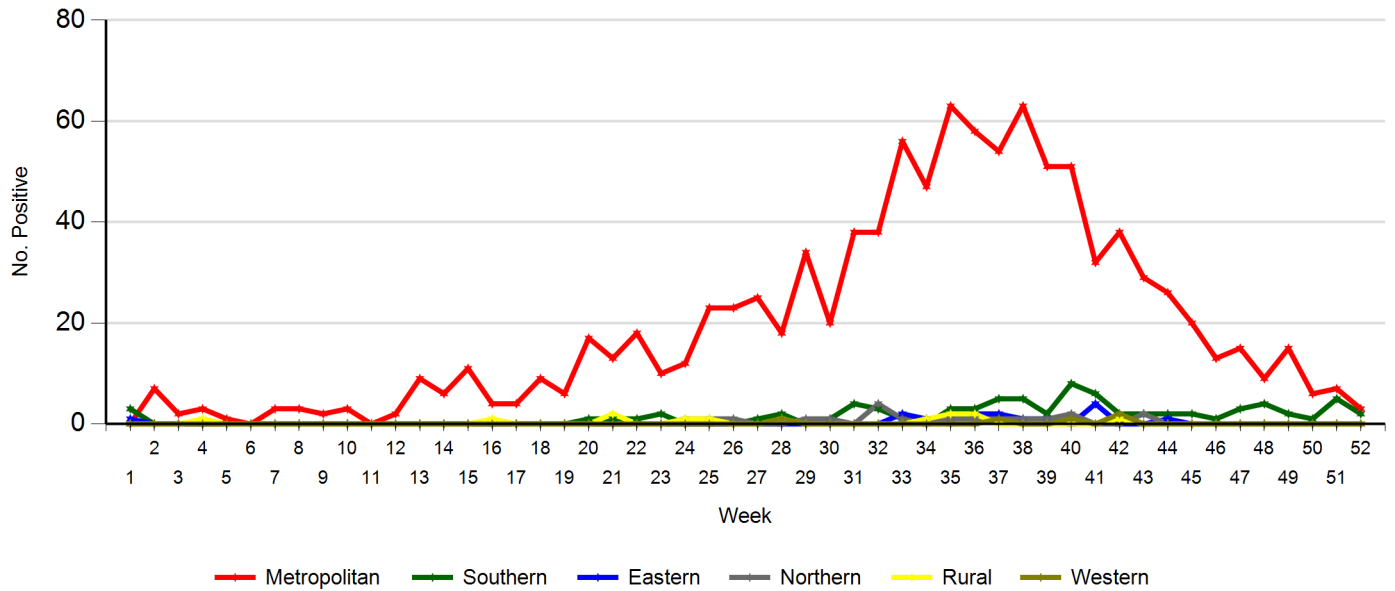


Figure 17. Positive Parainfluenza 4 by Week and Region for 2019

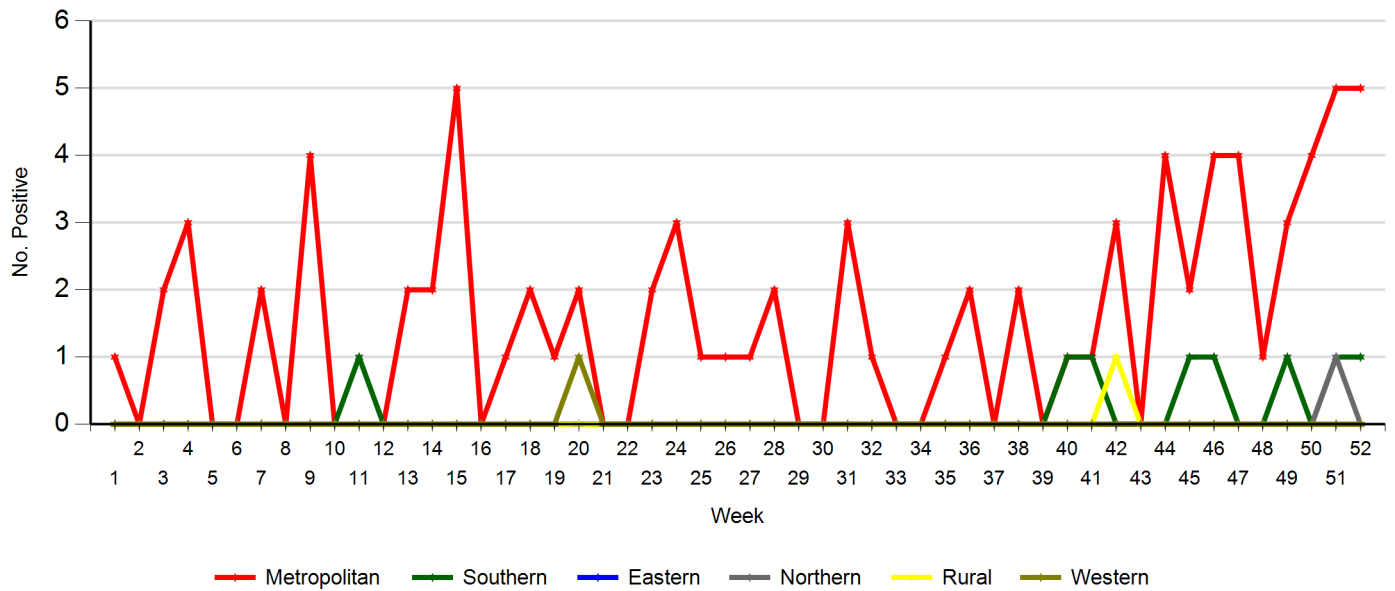


Figure 18. Positive Human Metapneumovirus by Week and Region for 2019

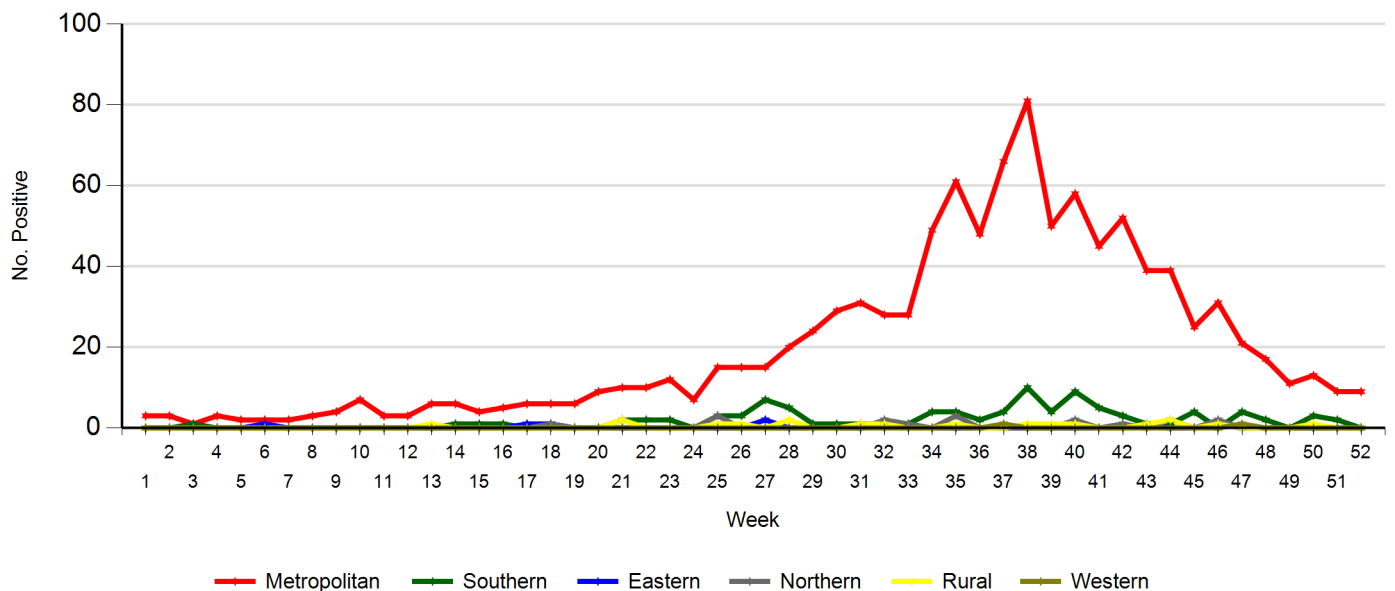


Figure 19. Positive Adenovirus by Week and Region for 2019

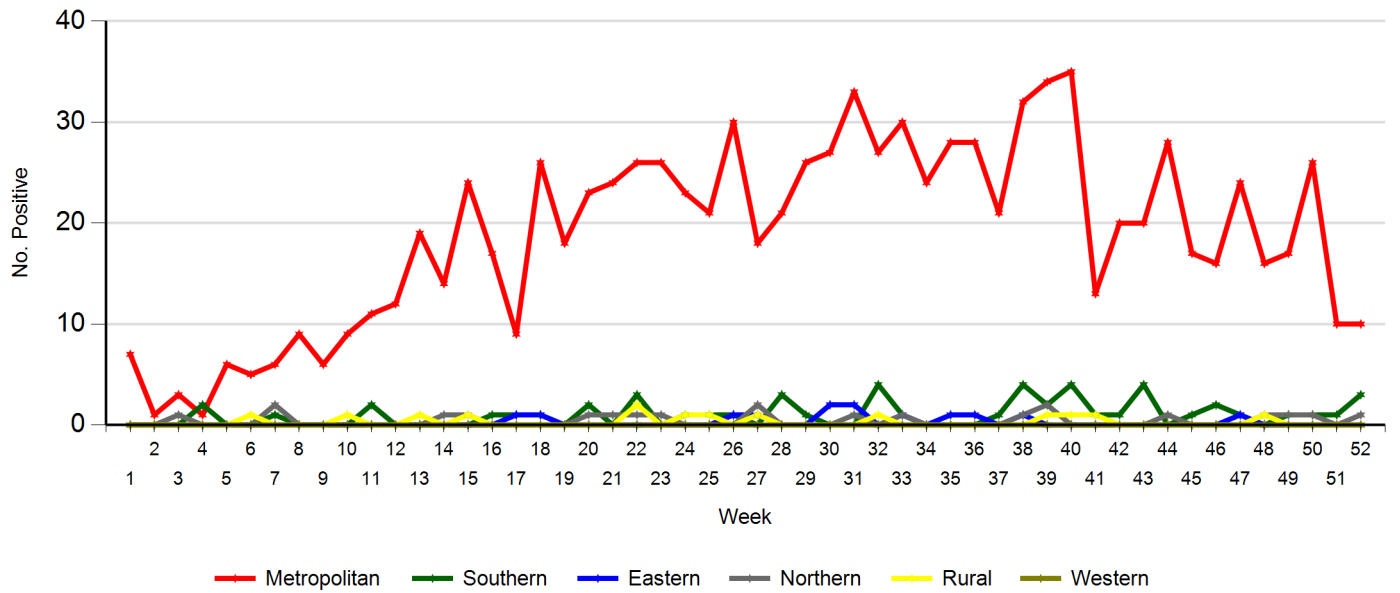
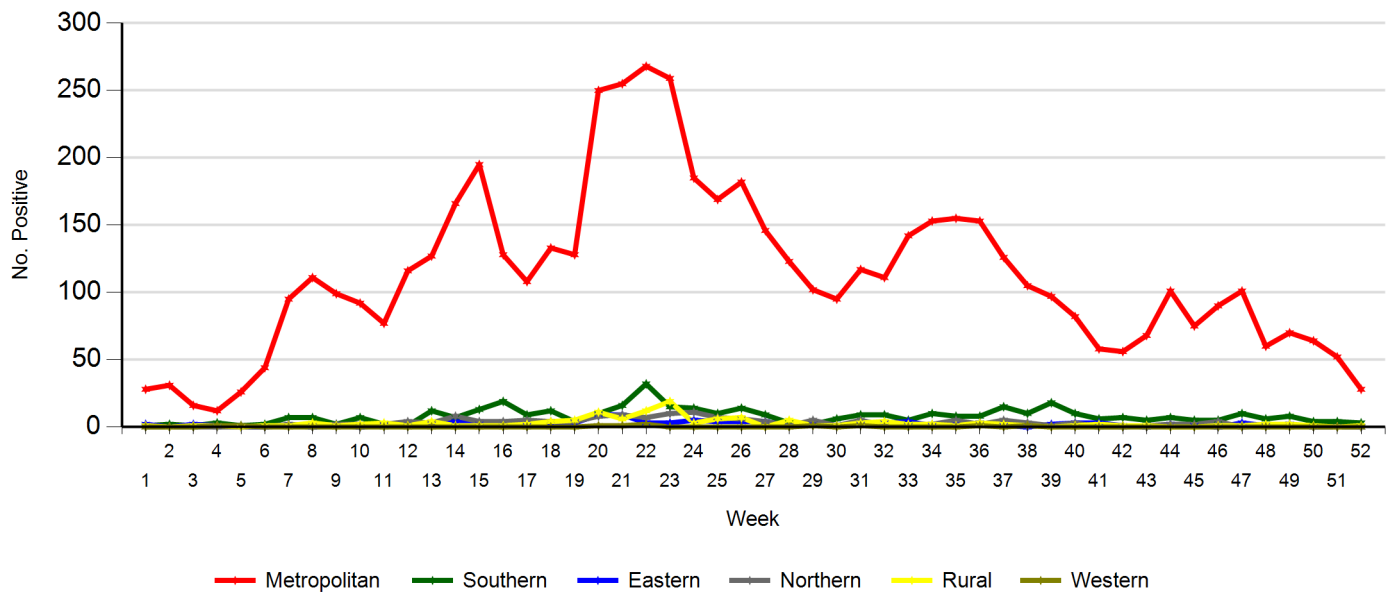


Figure 20. Positive Rhinovirus by Week and Region for 2019



Cumulative Respiratory Virus Reports: Table of contents

Figure1: Weekly influenza notifications by type and percentage of positive tests by week of testing. Referred testing from all jurisdictions is included.

Table 1: Weekly notifications of influenza viruses by type (influenza A, influenza B) and week.

Figure 2a: Weekly notifications of all respiratory viruses by type (influenza A, influenza B, RSV, Parainfluenza 1234, HMPV) - stacked. Referred testing from all jurisdictions is included.

Figure 2b: Weekly notifications of all respiratory viruses by type (influenza A, influenza B, RSV, Parainfluenza 1234, HMPV) - line graph. Referred testing from all jurisdictions is included.

Figure 3: YTD Weekly notifications of influenza (FLUA&B) by age group and gender.

Figure 4: YTD Weekly notifications Respiratory Syncytial Virus (RSV) by age group and gender.

Figure 5: YTD Weekly notifications Parainfluenza 1 virus (PARA1) by age group and gender.

Figure 6: YTD Weekly notifications Parainfluenza 2 virus (PARA2) by age group and gender.

Figure 7: YTD Weekly notifications Parainfluenza 3 virus (PARA3) by age group and gender.

Figure 8: YTD Weekly notifications Parainfluenza 4 virus (PARA4) by age group and gender.

Figure 9: YTD Weekly notifications Human Metapneumovirus (HMPV) by age group and gender.

Figure 10: YTD Weekly notifications Adenovirus virus (ADEN) by age group and gender.

Figure 11: YTD Weekly notifications Rhinovirus virus (RHINO) by age group and gender.

Table 2: Regions table South Australia.

Figure 12: Influenza notifications by week of testing and region.

Figure 13: Respiratory Syncytial Virus (RSV) notifications by week of testing and region.

Figure 14: Parainfluenza 1 virus (PARA1) by week of testing and region.

Figure 15: Parainfluenza 2 virus (PARA2) by week of testing and region.

Figure 16: Parainfluenza 3 virus (PARA3) by week of testing and region.

Figure 17: Parainfluenza 4 virus (PARA4) by week of testing and region.

Figure 18: Human Metapneumovirus (HMPV) by week of testing and region.

Figure 19: Adenovirus virus (ADEN) by week of testing and region.

Figure 20: Rhinovirus virus (RHINO) by week of testing and region.